

For your healthier

Water Quality
Measuring Instrument
Manufacturer



Water Test Disposables

Refractometer

Milk Analyzer

Electrode

Colorimetric Meter

COD Measurement

Water Analysis Instruments

Electromagnetic Flowmeter

Magnetic Heated Stirrer

Turbidity Meter

Industry Online Products

Laboratory Products CATALOG



COMPANY PROFILE

Established in 2008, Sinotester Co.,Ltd is a professional company that manufactures and exports laboratory instruments and equipments. We have our own factory, with strong R&D center, sales team, customer service team and QC team, which grows very fast and obtains good reputation in the market.

Our major products include: Refractometer, Test paper, pH meter, Electrode, TDS meter, Salinity meter, DO meter, ORP meter, Conductivity meter, Turbidity meter, Color comparison tube, Test kit, Colorimetric meter etc. Most of the products have CE certificate. All products can be customized according to buyers' special requirements.

SINOTESTER's uncompromising emphasis on ethical business practices, creativity and continual improvement has earned it a reputation as "Quality Best, Reputation First". A comprehensive quality control policy has been implemented. From raw material purchase to commodities delivery, each process is strictly under supervision. We will make every endeavor to supply high quality products and best services.

Up to now, we have exported our products to more than 80 countries over the world. "One step ahead" is corporation's aim and motive to develop strong and better.

We warmly welcome the friends all over the world contact us and establish friendship and business relationship. SINOTESTER will sincerely cooperate.

Our team will serve you with the most professional knowledge and the best service with you and joint hands to create a splendid future!



CERTIFICATES



CERTIFICATE OF CALIBRATION

ISO 9001:2008

CONTENTS

- ★ Water Test Disposables
- ★ Refractometer
- ★ Milk Analyzer
- ★ Electrode
- ★ Colorimetric Meter
- ★ COD Measurement
- ★ Water Analysis Instruments
 - ▲ DO Meter
 - ▲ pH Meter
 - ▲ pH Buffer Solution And Powder
 - ▲ Conductivity Meter
 - ▲ ORP Meter
 - ▲ Salinity Meter
 - ▲ TDS Meter
 - ▲ Multifunctional Water Tester
- ★ Electromagnetic Flowmeter
- ★ Magnetic Heated Stirrer
- ★ Turbidity Meter
- ★ Industry Online Products



CE CERTIFICATE(I)



CE CERTIFICATE(II)

WATER TEST DISPOSABLES

1. Water Test Strips

Sinotester test strips are actually a high-tech product, each one being a laboratory in your pocket allowing you to take them wherever you go. Sinotester test strips are ideal for the semi-quantitative determination of ions and compounds.

● Features

- Fast and easy results;
- Easy to handle for on the spot result;
- Wide range of tests;
- Ideal for an indication-saving time and cost.

● Scope

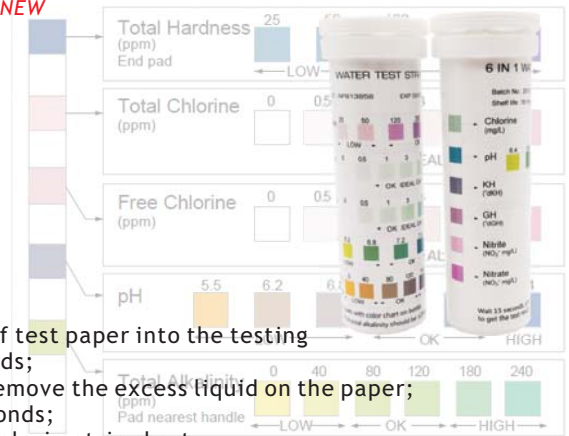
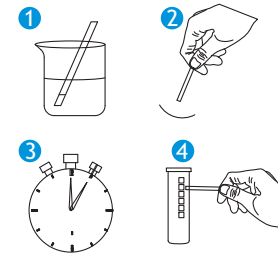
Agriculture, Aquaristics, Biotechnology, Drainage water, Boiler water, Drinking Water, Food, Environment, Groundwater, Milk, Mineral Water, Swimming Pool, Seawater, Electroplating, Disinfection control, Construction material, Dairy products, Beverages.etc.

● Remarks

Other unlisted test paper can be customized by client's request, can be individual aluminum foil packing.



● Operation Process ★NEW



1. Insert the reactive part of test paper into the testing liquid for specified seconds;
2. Swing the test paper to remove the excess liquid on the paper;
3. Waiting for specified seconds;
4. Compare the color with colorimetric chart.

Product Name	Graduation
Swimming Pool & SPA Test 5 in 1	50strips/vial
Total Hardness	25-50-120-250-425mg/L
Total Chlorine	0-0.5-1-3-5-10mg/L
Free Chlorine	0-0.5-1-3-5-10mg/L
pH	5.5-6.2-6.8-7.2-7.8-8.4pH
Total Alkalinity	0-40-80-120-180-240mg/L
Swimming Pool & SPA Test 5 in 1	50strips/vial
Total Hardness	0-100-250-500-1000mg/L
Total Chlorine	0-0.5-1-3-5-10mg/L
Cyanuric Acid	0-30-50-100-150-300mg/L
pH	6.2-6.8-7.2-7.8-8.4pH
Total Alkalinity	0-40-80-120-180-240mg/L
Swimming Pool & SPA Test 6 in 1	50pcs/vial
Chlorine	0-0.8-1.5-3.0 mg/L
pH	6.4-6.8-7.2-7.6-8.0-8.4-9.0pH
KH	0-40-80-120-180-240 mg/L
GH	25-50-120-250-425 mg/L
Nitrite(NO ₂ -)	0-0.5-2-5-10 mg/L
Nitrate(NO ₃ -)	0-10-25-50-100-250-500 mg/L
Swimming Pool & SPA Test 6 in 1	50pcs/vial
Chlorine	0-0.8-1.5-3.0 mg/L
pH	6.4-6.8-7.2-7.6-8.0-8.4-9.0pH
KH(° dKH)	0-3-6-10-15-20(° dKH)
GH(° dGH)	3-4-7-14-21(° dGH)
Nitrite(NO ₂ -)	0-0.5-2-5-10 mg/L
Nitrate(NO ₃ -)	0-10-25-50-100-250-500 mg/L



WATER TEST PAPER

Product Name	Code	Graduation
Hydrogen Peroxide test paper	LH-1001	0.5-2.5-10.-25mg/L H ₂ O ₂
	LH-1002	1-3-10-30-100mg/L H ₂ O ₂
	LH-1003	100-200-400-600-800-1000mg/L H ₂ O ₂
Peracetic acid test paper	LH-1004	0.5-1-2-4-10-20-40mg/L
	LH-1005	0-25-50-100-200-500mg/L
	LH-1006	100-200-500-1000-2000mg/L
Residual chlorine test paper	LH-1007	0.5-1-2-5-10mg/L Cl ₂
	LH-1008	25-50-100-200-500mg/L Cl ₂
	LH-1009	2-5-20-30-70-100mg/L NH ₄
Ammonia nitrogen test paper	LH-1010	10-30-60-100-200-400mg/L NH ₄
	LH-1011	50-120-200-270-350-420-500mg/L NH ₄
	LH-1034	0-0.5-1-3-5-10-20mg/L NH ₄
Phosphate test paper	LH-1012	10-25-50-100-250-500mg/L PO ₄ ³⁻
Nitrite test paper	LH-1013	1-5-10-25-50-80mg/L NO ₂
Total hardness test paper	LH-1014	25-50-120-250-425mg/L
Nitrate test paper	LH-1017	10-25-50-100-250-500mg/L NO ₃
Sulfur dioxide test paper	LH-1018	0-10-40-80-180-400 mg/L
Chlorine dioxide test paper	LH-1019	25-50-75-100-150-200 mg/L
Urea test paper	LH-1020	25-50-100-200-300mg/L
Ozone(in air) test paper	LH-1021	5-10-20-30-40mg/cm ³
Ascorbic acid test paper	LH-1022	50-100-200-300-500-700-1000-2000mg/L
Sulphite test paper	LH-1023	10-40-80-180-400mg/L SO ₃
Chromium/Cr(VI) test paper	LH-1024	0.2-0.5-1.0-3.0-5.0-10mg/L CrO ₄
	LH-1025	0.5-2-5-10-30-50-100mg/L CrO ₄
Ferrous(Fell) test paper	LH-1026	3-10-25-50-100-250-500mg/L Fe ²⁺
Zink test paper	LH-1027	10-40-100-250mg/L Zn ⁺
Sulphate test paper	LH-1028	200-400-800-1200-1600mg/L SO ₄ ²⁻
	LH-1029	200-400-600-800-1000mg/L Cl ⁻
Chloride test paper	LH-1030	500-1000-1500-2000-3000mg/L Cl ⁻
	LH-1031	10-25-50-100-200mg/L
Mercury test paper	LH-1032	0-20-50-100-200-500mg/L
	LH-1033	0.2-0.5-0.8-1 mg/L
Aluminum test paper	LH-1035	10-250mg/L AL
Arsenic test paper	LH-1037	0.1-0.5-1-1.7-3 mg/L
Copper test paper	LH-1039	0-10-30-100-300 mg/L
Sodium hypochlorite test paper	LH-1041	450 mg/L
Orthophthaldehyde(OPA) test paper	LH-1042	0.3-0.55 %
Quaternary test paper	LH-1043	2000 mg/L
Glutaraldehyde test paper	LH-1044	0-0.5-1-1.5-2-3 %
Quaternary test paper	LH-1045	0-10-25-50-100-250-500-1000 mg/L

2. pH Indicator Strips

Measuring pH without the use of any instruments, you can get the results easily.

Features

- Intense color development
- Precise results due to differentiated color graduations
- Quick on the spot results

Scope

Our pH test paper are suitable for environmental analysis, industrial in-process controls and within the education setting.

Remarks

pH test paper can be customized by client's request.



Product Name	Code	pH range	Packing
4-color pH indicator strips	LH-3101	0-14	Flat box packing
	LH-3102	4.5-10	
	LH-3103	4.5-9.0	
2-color pH indicator strips	LH-3104	3.8-5.4	Flat box packing
	LH-3105	0.5-5.0	
	LH-3106	0-7	
	LH-3107	7-14	
1-color pH universal comparator paper	LH-3108	0-14	Plastic box or Circular box packing
1-color pH universal test paper	LH-3109	1-14	Book packing

3. Color comparison tube

● Features

1. Convenient-small size and light weight, the test can be conducted without any other laboratory equipment and skilled people;
2. Fast-only need 3-5minutes to test one sample, no need extra material or instrument, easy to operate ;
3. Precise-all test parameters are according to international standards;
4. Portable-PE plastic tube, small size, light weight;
5. Sealed by aluminum foil, long shelf life, 18 month under normal temperature.



Product Name	Model No.	Measuring Range	Test Method	No. of Tests
COD test tube	LH-3001	0-18-35-53-88-147 mg/L	Colorimetry	50/box
	LH-3002	100-300-400-500-600-800mg/L	Colorimetry	50/box
Cyanide test tube	LH-3003	0.05-0.2-0.5-1-2-5mg/L	Colorimetry	50/box
Zinc test tube	LH-3004	0-0.5-1-2-5-10mg/L	Colorimetry	50/box
Total phosphorous test tube	LH-3005	0.1-0.5-1-2-5-10mg/L	Colorimetry	50/box
	LH-3006	0-0.5-1-3-5-10-20mg/L	Colorimetry	50/box
Ozone test tube	LH-3007	0.05-5mg/l/0.1-10mg/L	Colorimetry	50/box
Soft water hardness test tube	LH-3008	0-10-20-50-100-200mg/L	Colorimetry	50/box
Nitrate test tube	LH-3009	1-2-5-10-20-45mg/L	Colorimetry	50/box
Ammonia nitrogen test tube	LH-3010	0-0.2-0.5-1-2-5-10 mg/L	Colorimetry	50/box
Nitrite test tube	LH-3011	0-0.05-0.1-0.2-0.5-1-3mg/L	Colorimetry	50/box
Formaldehyde test tube	LH-3012	0.1-0.2-1-2-5mg/L	Colorimetry	50/box
Peroxide test tube	LH-3013	0.02-0.1-0.2-0.5-1-5 mg/L	Colorimetry	50/box
Peracetic acid test tube	LH-3014	0.1-0.2-0.5-1-2-5-10mg/L	Colorimetry	50/box
Nickel test tube	LH-3015	0.5-1-2-5-10mg/L	Colorimetry	50/box
Total chromium test tube	LH-3016	0.5 -1 -2-5 -10-20 mg/L	Colorimetry	50/box
Chromium/Cr(VI) test tube	LH-3017	0.05 -0.1 -0.5 -1 -2-5 mg/L	Colorimetry	50/box
Arsenic test tube	LH-3018	0.2 -0.5-1-2-5 -10 mg/L	Colorimetry	50/box
Copper test tube	LH-3019	0.1-0.3-0.5-1-3-5mg/L	Colorimetry	50/box
Cadmium test tube	LH-3020	0.1-0.3-0.5-1-3mg/L	Colorimetry	50/box
Total iron test tube	LH-3021	0.5-1-2-5-10mg/L	Colorimetry	50/box

Remarks: Other unlisted test tube or measuring range can be customized by client's request.
Neutral packing is available for big order.

4. Water Test Kit

● Features

1. Simple and easy-using visual colorimetry or titrimetry method, users can complete the test independently without specialized training;
2. Fast and efficient-several minutes is enough to complete the analysis of one water sample.No need any other instrument for test;
3. Accurate and reliable-the test method derives from the international standard, the result can be recognized worldwide;
4. Smart and portable-small size, light weight.

● Scope

Widely used in food, beverage, scientific, agricultural, environmental, monitor and all other related areas.



Product Name	Model No.	Measuring Range	Test Method	No. of Tests	Shelf Life
Ozone Test Kit	LH-2001	0.05-1mg/L	DPD Method	50/box	2 year
Free Chlorine Test Kit	LH-2002	0.05-1mg/L	DPD Method	50/box	2 year
Residual Chlorine Test Kit	LH-2003	0.1-2mg/L	DPD Method	300/box	2 year
Total Chlorine Test Kit	LH-2004	0.05-1mg/L	DPD Method	50/box	2 year
Ozone (Chlorine) Test Kit	LH-2005	0.05-1mg/L	DPD Method	30/box	1 year
Chlorine Dioxide Test Kit	LH-2006	0.05-2mg/L	DPD Method	25/box	1 year
Ammonia Test Kit	LH-2007	0.01-1mg/L	Salicylic acid Method	25/box	1 year
Sulfide Test Kit	LH-2008	0.02-0.8mg/L	DPD Method	30/box	1 year
Nitrite Test Kit	LH-2009	0.01-0.5mg/L	Diazo-Coupling Method	35/box	1 year
Dissolved oxygen Test Kit	LH-2010	0.2-20mg/L	Iodometric Method	50/box	1 year
Low hardness Test Kit	LH-2011	0.4-20mg/L	EDTA Titration Method	50/box	1 year
Total Hardness Test Kit LR	LH-2012	4-200mg/L	EDTA Titration Method	50/box	1 year
Total Hardness Test Kit HR	LH-2013	12-600mg/L	EDTA Titration Method	50/box	1 year
Purified Water Nitrite Test Kit	LH-2014	0.002mg/L	Diazo-Coupling Method	50/box	2 year
Chloride Test Kit	LH-2015	20-400mg/L	Silver Nitrate Titration Method	50/box	1 year
Sulfite Test Kit LR	LH-2016	1-20mg/L	Iodometric Method	50/box	1 year
Sulfite Test Kit HR	LH-2017	10-200mg/L	Iodometric Method	50/box	1 year
Alkalinity Test Kit LR	LH-2018	10-200mg/L	Acid-base titration Method	50/box	1 year
Alkalinity Test Kit HR	LH-2019	100-2000mg/L	Acid-base Titration Method	50/box	1 year
Total Phosphorus(Phosphate) Test Kit	LH-2020	0.03-0.5mg/L	Molybdenum Blue Method	25/box	1 year
Total iron Test Kit	LH-2021	0.05-1mg/L	1,10-Phenanthroline Method	25/box	1 year
Chromium (VI) Test Kit	LH-2022	0.05-1mg/L	DPC Method	25/box	1 year
Copper Test Kit	LH-2023	0.2-5mg/L	BCA Method	25/box	1 year
Manganese Test Kit	LH-2024	0.1-10mg/L	Potassium Periodate Oxidation Method	25/box	1 year
Nickel Test Kit	LH-2025	0-0.4mg/L	PAN Method	25/box	1 year
Arsenic Test Kit	LH-2026	0.004-0.08mg/L	Arsenic Spot Method	20/box	1 year
Beryllium Test Kit	LH-2027	0-30µg/L	ECR Method	50/box	1 year
Aluminum Test Kit	LH-2028	0-0.2mg/L	CAS Method	50/box	1 year
Silver Test Kit	LH-2029	0-0.5mg/L	Eosin Y Method	50/box	1 year
Formaldehyde Test Kit	LH-2030	0-1.5mg/L	MBTH Method	50/box	1 year
Fluorine Test Kit	LH-2031	0-1.5mg/L	Fluorine Reagent Method	50/box	1 year
Metasilicate Test Kit	LH-2032	5-200mg/L	Molybdosilicate Method	50/box	1 year

Remarks: Other unlisted test kit can be customized by client's request.

REFRACTOMETER

1. Traditional Hand Held Refractometer

● Features

1. Simple use, accurate measurement;
2. Portable, small size.

● Principle

Refractometer produces different refractive indexes in the liquid with different concentration, this is the design principle of the product.

● Scope

1. Brix and beer series are used to test canned food, juice, wine fermentation, beverage, fruit, honey etc.
2. Salinity series are used to test seaculture, aquaria, physiological saline etc.
3. Medical series are used to test serum protein, urine specific gravity;
4. Industrial series are used in car battery liquid, refrigerating fluid washing liquid, machine tool lubricating liquid, cutting fluid.



● operation process



1. Squeeze a drop;
2. Peek at the eyepiece;
3. Check the chart, you will see a circular field with graduations.

Scope of use	Model No.	Range	Resolution	Material
Brix	LH-T10	0-10%	0.1	Metal
	LH-T20	0-20%	0.1	Metal
	LH-T32	0-32%	0.2	Metal
	LH-T50	0-50%	0.5	Metal
	LH-T62	28-62%	0.2	Metal
	LH-T80	0-80%	0.5	Metal
	LH-T82	45-82%	0.5	Metal
Cutting fluid	LH-T90	0-90%	0.5	Metal
	LH-T20	0-20%	0.1	Metal
Emulsified mixture	LH-T32	0-32%	0.2	Metal
Salinity	LH-T80	0-80%	0.5	Metal
Sea water(Salinity)	LH-R15	0-15%	0.2	Metal
Freezing point	LH-Y28	0-28%	0.2	Metal
	LH-Y100	0-10%	0.1	Metal
Honey	LH-B50	(0)-(-50)°C	1°C	Metal
	LH-B70	(0)-(-70)°C	1°C	Metal
Red wine	LH-F90	58-90%	Baume' 0.25, Water 0.5%, Brix 0.5%	Metal
Beer	LH-H25	0-25%	0.2	Metal
Alcohol	LH-P113	1.000-1.130	0.001wort S.G	Metal
	LH-J80	0-80%	0.5	Metal
Refractive index	LH-D25	0-25%	0.2	Metal
	LH-Z140	1.330-1.400RI	0.001RI	Metal
Medical	LH-Z152	1.440-1.520RI	0.001RI	Metal
	LH-Y12	0-12g/dl	0.2g/dl	Metal

Remarks: Other unlisted range or scale can be customized by client's request.



2. Portable Waterproof Digital Refractometer

It's waterproof and can test sugar content of fruit, vegetable, juice, beverage and food processing.

Features

1. Digital display, easy to operate;
2. Small size, water proof, easy to clean;
3. Automatic temperature compensation(ATC);
4. Temperature display;
5. Automatic shutdown.

Product Parameter

1. Model No.: LH-B55;
2. Test item: Brix;
3. Measuring range: 0.0-55.0%;
4. Resolution: 0.1%, 0.1°C;
5. Accuracy: $\pm 0.2\%$;
6. Temperature Compensation: 10-40°C;
7. Test environment: 10-40°C, RH<95%;
8. Sample Volume: $\geq 0.5\text{ml}$;
9. Test time: 5s.



3. Portable Digital Refractometer

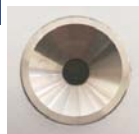
DR series digital refractometers contain brix refractometers, salinity refractometer, Freezing point refractometers, honey refractometers, medical refractometers. Meanwhile, it can test the physical index of liquid by one key detection.

Features

1. Digital display, easy to operate;
2. Small size, easy to clean;
3. Automatic shutdown;
4. Automatic temperature compensation(ATC).



large LCD display



sample cell



protective cover

DR Series' Parameter



Model No.	Test item	Measuring range	Resolution	Accuracy
LH-DR101	Brix	0--65%	0.1%	$\pm 0.2\%$
LH-DR102	Brix	0--65%	0.1%	$\pm 0.2\%$
	RI(nD)	1.3330-1.4535	0.0001	± 0.0003
LH-DR111	Brix	40-95%	0.1%	$\pm 0.2\%$
LH-DR112	Brix	40-95%	0.1%	$\pm 0.2\%$
	RI(nD)	1.3990-1.5320	0.0001	± 0.0003
LH-DR151	Brix	0-95%	0.1%	$\pm 0.2\%$
LH-DR152	Brix	0-95%	0.1%	$\pm 0.2\%$
	RI(nD)	1.3330-1.5320	0.0001	± 0.0003
LH-DR201	Salinity	0-28%	0.1%	$\pm 0.2\%$
LH-DR202	Salinity	0-28%	0.1%	$\pm 0.2\%$
	RI(nD)	1.3330-1.4098	0.0001	± 0.0003
LH-DR301	Urine SP.G	1.000-1.050	0.001	± 0.002
	Urine SP.G	1.000-1.050	0.001	± 0.002
LH-DR302	Serum P.	0-12	0.1	± 0.2
	RI(nD)	1.3330-1.3900	0.0001	± 0.0003
	Brix	0-35%	0.1%	$\pm 0.2\%$
LH-DR401	VOL AP	0-22%	0.1%	$\pm 0.2\%$
	Oe	0-150	1	± 2
	KMW	0-25	0.1	± 0.2
	Brix	0-35%	0.1%	$\pm 0.2\%$
LH-DR501	Salinity	0-28%	0.1%	$\pm 0.2\%$
	RI(nD)	1.3330-1.3900	0.0001	± 0.0003
	Water	38%-5%	0.1%	$\pm 0.2\%$
LH-DR601	Be'	33-48	0.1	± 0.4
	RI(nD)	1.4400-1.5320	0.0001	± 0.0003
	Brix	60-92%	0.1%	$\pm 0.2\%$
LH-DR602	Water	38%-5%	0.1%	$\pm 0.2\%$
	Be'	33-48	0.1	± 0.4
	RI(nD)	1.4400-1.5320	0.0001	± 0.0003
	Propylene G.	(32)-(-50)°F	0.°F	$\pm 2.0°F$
LH-DR701	Ethylene G.	(32)-(-50)°F	0.1°F	$\pm 2.0°F$
	Battery	1.00-1.50 sg	0.01sg	$\pm 0.01\text{sg}$
	Cleaner	(14)-(-40)°F	0.1°F	$\pm 2.0°F$
	Propylene G.	(0)-(-50)°C	0.1°C	$\pm 1.0°C$
LH-DR702	Ethylene G.	(0)-(-50)°C	0.1°C	$\pm 1.0°C$
	Battery	1.00-1.50 sg	0.01sg	$\pm 0.01\text{sg}$
	Cleaner	(0)-(-40)°C	0.1°C	$\pm 1.0°C$

● DP Series & RP Series' Digital Refractometer ★NEW

DP series and RP series refractometer adopts the linear array CMOS high-precision sensor, the sampling precision is high, and the repeatability is good.

The product shell adopts high-performance waterproof material, and has the function of anti-falling and anti-seismic.

the product uses ultra-low power consumption.

The product has the advantages of small and portable appearance, low price, and is suitable for the fields of daily life, health care, food and beverage industry production and procurement, medical and health, and automobile.



● DP Series' Parameter

Model No.	Series	Scale's Name	Range	Resolution	Accuracy
DP0101	Brix	Brix	0.0-50.0%	0.1%	±0.2%
		Refractive Index	1.3330-1.4420nD	0.0001nD	±0.0003nD
DP1101	Brix	Brix	0.0-50.0%	0.1%	±0.2%
		Refractive Index	1.3330-1.4420nD	0.0001nD	±0.0003nD
DP1102	Brix	Brix	0.0-90.0%	0.1%	±0.2%
		Refractive Index	1.3330-1.5318nD	0.0001nD	±0.0003nD
DP1202 (sea water)	Salinity	Sea Salinity	0-100‰	1‰	±2‰
		Sea Chlorinity	0-57‰	1‰	±2‰
		Sea S.G D20/4	1.000-1.070	0.001	±0.002
		Refractive Index	1.3330-1.4420nD	0.0001nD	±0.0003nD
DP1301	Honey	Brix	0.0-95.0%	0.1%	±0.2%
		Honey Water	38.0%-5.0%	0.1%	±0.2%
		Honey Baume	33.0-48.0	0.1	±0.2
DP1401	Wine	Refractive Index	1.3330-1.5318nD	0.0001nD	±0.0003nD
		Brix	0.0-60.0%	0.1%	±0.2%
		%VOL ap	0.0-22.0%	0.1%	±0.2%
DP1402	Beer	Wine Oe	0-150	1	±2
		KMW	0.0-25.0	0.1	±0.2
		Brix	0.0-60.0%	0.1%	±0.2%
DP1501	Clinical	Wort(sg) D20/20	1.000-1.130	0.001	±0.002
		URINE SP. G. (sg)	1.000-1.050	0.001	±0.002
		Serum P.	-0.1-12.0	0.1	±0.2
DP1609	Car	Refractive Index	1.3330-1.4420nD	0.0001nD	±0.0003nD
		Cleaner (°C)	(0)-(-60)°C	0.1°C	±0.5°C
		Ethylene Glycol (°C)	(0)-(-51)°C	0.1°C	±0.5°C
		Propylene Glycol (°C)	(0)-(-60)°C	0.1°C	±0.5°C
		Battery Fluid	1.000-1.500	0.001	±0.005
DP1616	Car	AD_Blue JIS	0-51.0%	0.10%	±0.2%
		E.G (V/V)	0.0-100%	0.1%	±0.5%
		Ethylene Glycol (°C)	(0.0)-(-51.0)°C	0.1°C	±0.5°C
DP1701	coffe	P.G (V/V)	0.0-100%	0.1%	±0.5%
		Propylene Glycol (°C)	(0.0)-(-60.0)°C	0.1°C	±0.5°C
		Brix	0.0-60.0%	0.1%	±0.2%
DP1701	coffe	coffe p1 TDS	0.0-25.0	0.1	±0.2
		Refractive Index	1.3330-1.4420nD	0.0001nD	±0.0003nD



● RP Series' Parameter

Model No.	Series	Scale's Name	Range	Resolution	Accuracy
RP101	Brix	Brix	0.0-50.0%	0.1%	±0.2%
		Refractive Index	1.3330-1.4420nD	0.0001nD	±0.0003nD
RP102	Brix	Brix	0.0-90.0%	0.1%	±0.2%
		Refractive Index	1.3330-1.5318nD	0.0001nD	±0.0003nD
RP202 (sea water)	Salinity	Sea Salinity	0-100‰	1‰	±2‰
		Sea Chlorinity	0-57‰	1‰	±2‰
		Sea S.G D20/4	1.000-1.070	0.001	±0.002
		Refractive Index	1.3330-1.4420nD	0.0001nD	±0.0003nD
RP301	Honey	Brix	0.0-95.0%	0.1%	±0.2%
		Honey Water	38.0%-5.0%	0.1%	±0.2%
		Honey Baume	33.0-48.0	0.1	±0.2
		Refractive Index	1.3330-1.5318nD	0.0001nD	±0.0003nD
RP401	Wine	Brix	0.0-60.0%	0.1%	±0.2%
		%VOL ap	0.0-22.0%	0.1%	±0.2%
		Wine Oe	0-150	1	±2
RP402	Beer	KMW	0.0-25.0	0.1	±0.2
		Brix	0.0-60.0%	0.1%	±0.2%
		Wort(sg) D20/20	1.000-1.130	0.001	±0.002
RP501	Clinical	URINE SP. G. (sg)	1.000-1.050	0.001	±0.002
		Serum P.	-0.1-12.0	0.1	±0.2
RP609	Car	Refractive Index	1.3330-1.4420nD	0.0001nD	±0.0003nD
		Cleaner (°C)	(0)-(-60)°C	0.1°C	±0.5°C
		Ethylene Glycol (°C)	(0)-(-51)°C	0.1°C	±0.5°C
		Propylene Glycol (°C)	(0)-(-60)°C	0.1°C	±0.5°C
		Battery Fluid	1.000-1.500	0.001	±0.005
		AD_Blue JIS	0-51.0%	0.1%	±0.2%
RP616	Car	E.G (V/V)	0.0-100%	0.1%	±0.5%
		Ethylene Glycol (°C)	(0.0)-(-51.0)°C	0.1°C	±0.5°C
		P.G (V/V)	0.0-100%	0.1%	±0.5%
		Propylene Glycol (°C)	(0.0)-(-60.0)°C	0.1°C	±0.5°C
RP701	coffe	Brix	0.0-60.0%	0.1%	±0.2%
		coffe p1 TDS	0.0-25.0	0.1	±0.2
RP701	coffe	Refractive Index	1.3330-1.4420nD	0.0001nD	±0.0003nD

MILK ANALYZER ★NEW

LH-FA(CP1)

● Features

- User-friendly: simple in operation, maintenance, calibration and installation
- Portable and compact design
- Very small quantity of milk required
- Low power consumption
- No use of hazardous chemicals
- One year full warranty
- Measuring accuracy adjustment can be done by the user RS 232 Interface
- ESC POS Printer Support
- Two samples self-calibration

Environmental Conditions

Ambient air temperature-10°C-40°C (option 43°C)

Milk temperature -1°C-40°C

Relative humidity-30%-80%

Electrical Parameters

AC Power Supply voltage-220V/110V

DC Power Supply voltage-12V to 14,2V

Power Consumption 30W max



Parameter	Measuring range	Accuracy
Fat	0.01% - 25%	±0.1%
Solids-non-fat (SNF)	3% - 15%	±0.15%
Density	1015 - 1160 kg/m3	±0.3kg/m3
Protein	2% - 7%	±0.15%
Lactose	0.01% - 6%	±0.2%
Added water	0% - 70%	±3
Milk sample temperature	1°C - 40 °C	±1%
Freezing point	-0.4°C - 0,7°C	±0.001%
Salts	0.4% - 1.5%	±0.05%



ELECTRODE

Note: BNC connector will be default option. But Y blades connector, pins connector are also available, please indicate when you order to us.



● pH Electrode

Model No.	Measuring Range	Working Temp	Body material	Refillable	Suffer strong Acid and Alkaline	Technical data
E-201		5-60°C	Plastic	No	No	Theoretic percent slope: $\geq 97\%$ (25°C) Zero point pH value: $(7 \pm 0.25)\text{pH}$ (25°C) Inner impedance: $\leq 250\text{M}\Omega$ (25°C) Response time: ≤ 1 second (after stirring) Alkaline error: $\leq 15\text{mV}$ (25°C) Connector: Regular BNC Cable Length: 1 M
E-6501		5-60°C	Glass	No	No	
E-6501R	0-14 pH	100°C	Glass	Yes	No	
E-6503		5-90°C	Glass	Yes	Yes	
E-901 Flat Surface		0-80°C	Plastic	No	No	

● Online pH Electrodes

Model No.	Measuring range	Body Material	Working Temp	Suffer strong Acid and Alkaline	Other Technical data
ZP-1 ZP-1T	0 - 14pH	Plastic	0-80°C	No	Accuracy: $\leq 0.01\text{pH}$ Drift degree: $\leq 0.02\text{pH}/24\text{hours}$ Slope: 97% Sensitive membrane impedance: $\leq 200 \times 10^6 \Omega$ Isoelectric point of electrode: $7 \pm 0.5\text{pH}$ Connector: Regular BNC Response time: 5sec (after stirring) ZP-1T and ZP-2T with Temperature sensor PH-EC is for ph and conductivity testing
ZP-2 ZP-2T		Glass		Yes	
★ PH-EC	0 - 14pH	Plastic	0-70°C	No	

● Conductivity Electrode



Model No.	Cell Constant	Cell Materials	Recommended Application Range	Connector
DJS-0.1	0.1±0.02	Glass/Pt	0-199.9μS/cm	BNC
DJS-1	1.0±0.2	Glass/Pt	0-19990μS/cm	BNC
DJS-10	10±2	Glass/Pt	0-199.9mS/cm	BNC
★ DJS-1T9	1.0±0.2	Glass/Pt	0-19990μS/cm	Pins connector
★ DJS-1T12	1.0±0.2	Glass/Pt	0-19990μS/cm	Pins connector

● Online Conductivity Electrode



Model No.	Constant of electrode	Measuring range	Cell Material	Connector
ZC-0.01	0.01	0.01-20μS/cm	316L or Titanium alloy	1/2 or 3/4 Thread Installation
ZC-0.1	0.1	0.1-200μS/cm		
ZC-1	1	1-2000μS/cm		
ZC-10	10	10-20000μS/cm		

ORP Electrodes

Model No.	Temp. Range	Internal Ref.	Junction	Connector
501	5-60°C	Ag/AgCl	Fiber	BNC

Online ORP Electrodes

Model No.	The reference electrode resistance	Measuring range	Stability	Temp. Range	Body Material
ZO-1	<=10KΩ	±2000mV	±8mv/ 24hours	5-70°C	Plastic
ZO-2					Glass

DO Electrodes ★NEW

Model No.	Measuring Range	Measurement accuracy	Resolution	Calibration method	Temperature range
DO-1	0-20mg/L or 0-200% saturation	DO: ±1-1.5% Temp.: ±0.1 °C	DO: 0.001mg/L Temp.: ±0.01 °C	Single-point, two-point	0-50°C

PORTABLE COLORIMETRIC METER



Portable colorimetric meter is mainly used for rapid test to get the ion concentration in the water, using international standard method. It is eco-friendly, the test is fast and the result is accurate.



Features

1. Excellent optical system design, with advanced microprocessor chip
2. Humanized operation interface, simple and convenient
3. Adopting specialized optical colorimetric cuvette, high accurate
4. High accurate silicon photocell sensor and light source

Model No.	Product Name	Lower limit for detection	Accuracy	Measuring Range
LH-C01	Residual chlorine colorimetric meter	0.01mg/L	result<=1.50mg/L: ±0.02mg/L; result>1.50mg/L: ±0.05mg/L	0.00-3.00mg/L
CD-03	Chlorine dioxide meter	0.01mg/L	±n*5%-±0.02mg/L(n:displayed no.)	0.00-5.00mg/L
LH-D01	Ozone colorimetric meter	0.01mg/L	result<=1.00mg/L: ±0.05mg/L; result>1.00mg/L: ±0.10mg/L	0.00-2.50mg/L
LH-N11	Ammonia nitrogen colorimetric meter	0.1mg/L	result<=5.00mg/L: ±n*2%-±0.02mg/L; result>5.00mg/L: ±n*10%-±0.2mg/L (n:displayed no.);	0.0-10.0mg/L
LH-P35	Total Phosphorus colorimetric meter	0.01mg/L	±n*5%-±0.02mg/L(n:displayed no.)	0.00-5.00mg/L
LH-N23	Nitrite colorimetric meter	0.01mg/L	±n*5%-±0.02mg/L(n:displayed no.)	0.00-0.30mg/L(NO ₂ -N)



COD REACTOR AND TEST TUBE HEATER

Features

1. The XC-200 thermo-reactor is constructed of durable materials with a vial capacity to perform up to 4 digestions simultaneously;
2. The reactor can set the heating temperature between 20-180°C and heating period between 0-120mins;
3. The reactor contains a thermal fuse that prevents overheating, by turning off the heating element automatically with warning beep;
4. A beep will be heard and the heating element will turn off at the end of the selected time period;
5. The temperature is continuously displayed on the LCD even when there is no active temperature program running;
6. The reactor equips transparent plastic protection shield to protect the operator;
7. The reactor has USB connector which can connect with 12V Vehicle Power Adaptors for outside using.



XC-200	
Temperature Range	20-180°C
Accuracy	±3 °C(@ 25°C)
Capacity	4 vials (the diameter of vial should be not more than 16mm.)
Warm-up Time	10-15 minutes, depending on selected temperature
Heating period	0-120mins
Environment temperature	(0-40)°C
Environment relative humidity	<=85%
Power Supply	DC 12V/10A
Dimensions	110*170*135 mm
Weight	1.4 KG with adaptor

MINI INTELLIGENT COD DETECTION METER ★NEW

XC-300 mini intelligent COD detection meter, is a new generation COD meter. It solves the problem that when people detect outside without electricity power. It is suitable for testing chemical oxygen demand(COD)of surface water, underground water, drinking water, domestic sewage and industrial waste water. Note: Product XC-300 detection meter can also be customized to test ammonia nitrogen, total phosphorus and residual chlorine and other ions' detection curve.



Model No.	Product Name	Measuring Range	Technical Data
XC-300	COD meter (compatible with HACH COD reagent)	0-10000mg/L	Accuracy:±5% Method:spectrophotometry Wavelength: 420nm/520nm/620nm Environment temperature: 0-50°C Environment relative humidity: <=80% Battery life : >=30hours Dimensions: 125x90x70mm
XC-300C1	COD meter	0-15000mg/L	
XC-300C2	COD & Ammonia nitrogen meter	0-15000mg/L 0-50.00mg/L	
XC-300C3	COD, Ammonia nitrogen & Total Phosphorus meter	0-15000mg/L 0-50.00mg/L 0-20.00mg/L	
XC-300D65	COD, Ammonia nitrogen , Total Phosphorus & Total nitrogen meter	0-15000mg/L 0-50.00mg/L 0-20.00mg/L 0.5-50.00mg/L	
XC-300NP2	Ammonia nitrogen & Total Phosphorus meter	0.00-5.00mg/L	
XC-300P35	Total Phosphorus meter	0-20.00mg/L	
XC-300D62	Total nitrogen meter	0.5-50.00mg/L	



DO-161/PH-131/CD-141

Do Meter, pH/ORP Meter, Conductivity Meter

Introduction

New type waterproof water treatment instrument satisfies the demand of most users with high rate between price and performance. There are three types: portable dissolved oxygen (DO) meter DO-161, portable pH/ORP meter PH-131, portable conductivity meter CD-141 with classification of waterproof IP67 and shockproof design. It is suitable for fields of monitoring under rugged environment and underwater works.

Application

Portable DO meter DO-161 can test the dissolved oxygen in water, which is used in many fields like aquaculture, water treatment, environmental monitoring, river regulation and so on.

pH/ORP meter PH-131 is an instrument to test PH value and material content, widely used in sewage treatment, chemical industry, textile printing, paper making, pharmacy, electroplating and other environmental protection fields.

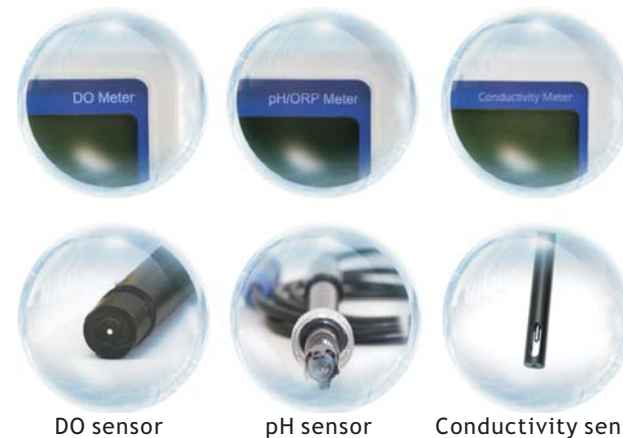
Conductivity meter CD-141 is an instrument to test liquid conductivity, widely used in chemical fertilizer, metallurgy, water treatment, pharmacy, biochemistry, foodstuff, culture and waterworks and so on.

Features

- IP67 Waterproof, Shockproof & dustproof
- High Accuracy, Data Hold & Auto Power-Off
- Restore Factory Default & Replaceable electrode



Parameter



Model No.	Test item	Measuring range	Resolution	Accuracy	Other Technical data
DO-161	Saturation	0-199.9%	0.1	±1.5% F.S	
	DO	0-19.99mg/L	0.01	±1.5% F.S	
	Temp	0.0-50.0°C (32-122°F)	0.1°C (0.1°F)	±0.5°C (±0.9°F)	
CD-141	EC	0 to 19.99µS 20.00 to 199.9µS 200.0 to 1999µS 2.00 to 19.99mS 20.0 to 100.0mS	0.1	±2% F.S	ATC: 32-122°F or 0-50°C Working voltage: 2*AAA 1.5V battery Working condition: 32-122°F (0-50°C) 2 points calibration
	TDS	0.0 to 9.99ppm 10.0 to 99.9ppm 100 to 999ppm 1.0 to 9.99ppt 10.0 to 100.0ppt	0.01	±2% F.S	
	Temp	0.0-80.0°C (32-176°F)	0.1°C (0.1°F)	±0.5°C (±0.9°F)	
PH-131	pH	0.00-14.00 pH	0.01 pH	±0.02 pH	ATC: 32-140°F or 0-60°C Working voltage: 2*AAA 1.5V battery Working condition: 32-122°F(0-50°C) 5 points calibration
	Temp	0.0-60.0°C (32-140°F)	0.1°C (0.1°F)	±0.5°C (±0.9°F)	
	ORP	(-1200)-(+1200)mV	0.1mV	±1mV	



PHB-4 pH/ORP METER

Features

1. High accuracy, Backlit screen;
2. 3 points automatic calibration;
3. Replaceable pH electrode and automatic temperature compensation, test result be more precise.



Model No.	Test item	Measuring range	Resolution	Accuracy	Other Technical data
PHB-4	pH	0.00-14.00 pH	0.01 pH	±0.01 pH	ATC: 0-60°C Working voltage: 4*1.5V AAA battery Working condition: 0-40°C, RH<85% ORP electrode is optional item
	Temp	0-60°C	1°C	±1°C	
	ORP	(-1999)-(+1999)mV	1mV	±n*0.1%±1(n: displayed no.) mV	

DDB-4 CONDUCTIVITY METER

Features

1. Backlit screen;
2. 2 points automatic calibration;
3. High accuracy, replaceable electrode and automatic temperature compensation, test result be more.



DDB-4

Measuring range	(0-199.9)μS/cm	(200-1999)μS/cm	(2.00-19.99)mS/cm	(20.0-199.9)mS/cm
Resolution	0.1μS/cm	1μS/cm	0.01 mS/cm	0.1mS/cm
Accuracy	±1.0%FS			
ATC	10-50°C			
corresponding electrode constant	0.1	1	10	
Working condition	temperature: 0-40°C, RH<85% Power: 4pcs DC 1.5V AAA dry battery No notable vibration No strong magnetic field interference(except for geomagnetic field)			
Dimension	180x80x30mm			
Weight	0.5KG			



pH METER

PHS-550/PH-8414/PH-2603

Features

1. Quick response with good stability;
2. Using high speed microprocessor chip, stable performance;
3. Detachable electrode, easy for replacement.



Model No.	Test item	Measuring range	Resolution	Accuracy	Other Technical data	Feature
PHS-550	pH	0.00-14.00 pH	0.01 pH	±0.01 pH	ATC: 0-100°C Working voltage: 9V DC adaptor Working condition: 0-40°C, RH<85%	Bench top High accuracy Replaceable pH electrode
	Temp	0-100°C	1°C	±1°C	2 points automatic calibration	
	ORP	(-1999)-(+1999)mV	1mV	±n*0.1%±1 (n: displayed no.) mV		
PHS-3C	pH	0.00-14.00PH	0.01PH	±0.01pH	ATC: 0°C-50°C Power Supply:AC220V 50Hz Operating Temperature:0°C-50°C	Bench top High accuracy Replaceable pH electrode
	Temp	0-100°C	0.1°C	±0.5°C	2 points with auto buffer recognition	
PH-8414	pH	0.00-14.00 pH	0.01 pH	±0.01 pH	ATC: 0-95°C Working voltage: 9V 6F22 battery	High accuracy Replaceable pH electrode
	Temp	0-100°C	0.1°C	±0.4°C	Working condition: 5-60°C, RH<95%	
	ORP	(-1999)-(+1999)mV	1mV	±n*0.1%±1 (n: displayed no.) mV	1 or 2 points calibration	
PH-2603	pH	0.00-14.00 pH	0.01 pH	±0.01 pH	ATC: 0-95°C	Bench top High accuracy Replaceable electrode
	Temp	0-100°C	1°C	±0.4°C	Working voltage: 9V	With backlit Automatic temperature compensation
	ORP	(-1999)-(+1999)mV	1mV	±n*0.1%±1 (n: displayed no.) mV	Working condition: 5-50°C, RH<95%	1 or 2 points calibration
	EC	0.00-19.99mS/cm	0.01mS/cm	±2%F.S		
	CF	0.0-199.9CF	0.1CF	±2%F.S		With built-in rechargeable battery
TDS	10-19990ppm	10ppm	±2%F.S			

PEN TYPE pH METER ★NEW

PH-107/PH-108/PH-618/PH-3508/PH-2012

Features

1. Economical;
2. Small size, portable;
3. High accuracy, no need any other auxiliary instruments.



Model No.	Test item	Measuring range	Resolution	Accuracy	Other Technical data	Feature
PH-107	pH	0.0-14.0 pH	0.1 pH	±0.1 pH	Working voltage: 3*1.5V (AG-13 type button cell battery) Working condition: 0-60°C 1 point calibration	Small size Portable Economical
PH-108	pH	0.0-14.0 pH	0.1 pH	±0.1 pH	ATC: 0-50°C Working voltage: 3*1.5V (AG-13 type button cell battery) Working condition: 0-50°C RH<95%, 1 point calibration	Small size Portable Economical With ATC
	pH	0.00-14.00 pH	0.01 pH	±0.03 pH		High accuracy Water proof Replaceable pH electrode
PH-618	Temp	0-50°C (32-122°F)	0.1°C (0.2°F)	±0.5°C (±1°F)	ATC: 0-50°C Working voltage: 4*1.5V (AG-13 type button cell battery) 2 points automatic calibration	Automatic calibration Automatic shutoff Backlit screen
	pH	0.00-14.00pH	0.01pH	±0.02pH		
★ PH-3508	EC	0-1999µs/cm 0-19.99mS/cm	1µs/cm (< 1999µs/cm) 10µs/cm (> 1999µs/cm) 0.01mS/cm	±2% F.S	ATC: 0-50°C Working voltage: 3*1.5V (AG-13 type button cell battery) 2 points(4.01, 6.86) automatic calibration	High accuracy Water proof Replaceable pH electrode Automatic calibration Automatic shutoff Backlit screen
	TDS	0-1999ppm 0-19.99ppt	1ppm (< 1999ppm) 10ppm (> 1999ppm) 0.01ppt	±2% F.S		
	Temp	0-50°C	0.1°C	±0.5°C		
PH-2012	pH	0.00-14.00 pH	0.01 pH	±0.1 pH	ATC: 0-50°C Working voltage: 4*1.5V (AG-13 type button cell battery)	Backlit screen Can test pH and temp Small size Portable
	Temp	(-50)-(+70)°C	0.1°C	±1°C	Working condition: 0-50°C, RH<95% 1 point calibration	Economical High accuracy With ATC



PEN TYPE pH METER

PH-220/PH-280/PH-220W/PH-280A

Features

1. Economical;
2. Small size, portable;
3. High accuracy, no need any other auxiliary instruments.



Model No.	Test item	Measuring range	Resolution	Accuracy	Other Technical data	Feature
PH-220	pH	0.00-14.00 pH	0.01 pH	±0.02 pH		
	Temp	0-50 °C (32-122 °F)	0.1 °C (1 °F)	±1 °C (±2 °F)		
PH-280	pH	0.00-14.00 pH	0.01 pH	±0.02 pH		
	Temp	0-50 °C (32-122 °F)	0.1 °C (1 °F)	±1 °C (±2 °F)	ATC: 0-50 °C Working voltage: 4*1.5V (AG-13 type button cell battery) 3 points automatic calibration	High accuracy Water proof Replaceable pH electrode Data hold function Automatic calibration Automatic shutoff
PH-220W BNC connector	pH	0.00-14.00 pH	0.01 pH	±0.02 pH		
	Temp	0-50 °C (32-122 °F)	0.1 °C (1 °F)	±1 °C (±2 °F)		
PH-280A BNC connector	pH	0.01-14.00 pH	0.01 pH	±0.01 pH		
	Temp	0-50 °C (32-122 °F)	0.1 °C (2 °F)	±1 °C (±2 °F)		

PORTABLE pH/TEMPERATURE METER ★NEW

PH-113

Features

High-precision; small size; simple, easy accessibility and the operation panel that makes machines easy to understand, easy to operate. Automatic temperature compensation, with the help of the temperature probe, can automatically correct the impact of temperature on the pH. Accurate thermometer, the temperature of an independent probe, the sensor can be quickly tested solution temperature. BNC with the composite electrode and 9 V battery, around the world to facilitate the replacement of batteries and electrodes. Economical and practical, fully in line with a wide range of industries need to test.



Model No.	PH-113
Measuring Range	pH: 0.00-14.00pH Temp: 0-100°C
Accuracy	pH: ±0.02pH Temp: ±0.5°C
Resolution	pH: 0.01pH Temp: 0.1°C
Display	pH: 4-Digital LCD Temp: 3-Digital LCD
Power Supply	1×9V Battery
Operating Conditions	Temp: 0°C-50°C, Humidity: $\leq 95\%$
Input Impedance	$10^{12}\Omega$
Dimensions	123mm×72mm×33mm
Weight	240g
Calibration	2 points with auto buffer recognition



LAB pH ORP TEMPERATURE METER ★NEW

PH-98

Features

This instrument and built-in microprocessor chips, good looking, feature rich, easy to use, with the following notable features:

1. High accuracy 0.001.
2. new designs, large screen displays.
3. User-friendly interface, stability indicating identity.
4. Three standard, two-point or single-point automatic calibration.
5. Automatic temperature compensation.
6. Wide range of PH and redox potential measurements.



Technology Parameters

Range	pH	-2.000 ~ 16.000 pH
	mV	-1999.9 ~ 1999.9mV
	Temp	0 ~ 100 °C
Resolution	pH	0.001 pH
	mV	0.1 mV
	Temp	0.1 °C
Accuracy	pH	±0.001pH
	mV	±0.1 mV (0 ~ 550 mV); ±0.2 mV (550 ~ 1999mV)
	Temp	± 0.1 °C
Automatic Temperature Compensation 0 ~ 50 °C		
pH Calibration	1 or 2 points with auto buffer recognition	
Input impedance	10 ¹² Ohm	
Power Supply	12 Vdc	
Environment	Temperature :0°C-50°C Humidity: ≤95%	
Dimensions	150 x 110 x 50 mm	



pH BUFFER SOLUTION & POWDER

LH-PH

Features

The available values are 4.00, 4.01, 6.86, 7.00, 9.18, 10.01 pH.
For pH buffer powder, each sachet can prepare 250ml buffer solution.
For pH buffer solution, each bottle contains 25ml solution.

SOIL pH-MOISTURE METER ★NEW

KS-03/KS-04/KS-05/KS-06/KS-07

Features

It can be used to test pH and moisture in soil. It's portable, easy to use, and can be directly inserted into the soil.



Model No.	Test item	Measuring range	Resolution	Accuracy	Other Technical data	Feature
KS-03	pH	3.5-8.0pH	0.01pH	0.1 pH	Working condition: (0-40°C)	Probe length:17.5cm, Moisture:1-10 Light:0-2000
KS-04	pH	3.5-9.0pH	0.5 pH	0.5 pH	Working condition: (+5°C-+40°C)	Probe length:20cm, Moisture:1-10 Light:0-2000 Temp : -9-+50(16-122°F)
KS-05	pH	3.0-8.0 pH	0.2 pH	±0.2 pH	Moisture test range: 10-80% Working condition: 5-50°C(41-122°F)	The depth can be measured:6cm, Applicable to surface soil pH measurement
KS-06	pH	3.0-8.0 pH	0.2 pH	±0.2 pH	Moisture test range: 10-80% Working condition: 5-50°C(41-122°F)	The depth can be measured:30cm, Applicable to the deep soil pH measurement
KS-07	pH	3.0-8.0 pH	0.25 pH	0.25 pH	Working condition: 0-50°C(32-122°F)	Probe length:8.5cm, Applicable to the deep soil pH measurement



CONDUCTIVITY METER

DDB-220

● Features

Pen type electric conductivity meter, it is designed for on site or field operation at the same time conductivity value and temperature value of portable pen type precision instruments. The instrument is suitable for tap water monitoring, aquaculture, environmental protection, printing and dyeing, electroplating, beverage industry and scientific research units for the determination of the conductivity of water quality.

DDS-22C

● Features

1. Backlit screen;
2. Automatic calibration;
3. Using high speed microprocessor chip, stable performance;
4. Bended metal electrode rack, can be placed at right or left side;
5. 1408 μ S/cm electric conductivity standard calibration plug, fast and convenient;
6. High accurate electrode and automatic temperature compensation, test result be more precise.



★NEW

DDB-220



DDS-22C

Model No.	Measuring range	Resolution	Precision	Conductivity calibration	Temperature display	Working temperature	Automatic temperature compensation
DDB-220H	0-19.99mS	0.01mS	$\pm 0.02\text{mS} + 2\% \text{FS}$	12.88mS point calibration	0.1 $^{\circ}$ C/ $^{\circ}$ F	0~50 $^{\circ}$ C (32~122 $^{\circ}$ F)	0~50 $^{\circ}$ C
DDB-220L	0-1999 μ S	1 μ S	$\pm 2\mu\text{S} + 1\% \text{FS}$	1413 μ S point calibration			

Model No.	Measuring range	Resolution	Accuracy	ATC	Temperature coefficient	Stored data	Working condition
DDS-22C	(0-199.9) μ S/cm	0.1 μ S/cm	$\pm 1.0\% \text{FS}$	0-50 $^{\circ}$ C	2.0%/ $^{\circ}$ C	No., test result, unit, temperature	temperature: 5-35 $^{\circ}$ C, RH<85% Power: 220V $\pm 10\%$, 50Hz $\pm 1\text{Hz}$, DC9V No notable vibration No strong magnetic field interference (except for geomagnetic field)
	(200-1999) μ S/cm	1 μ S/cm					
	(2.00-19.99)mS/cm	0.01 mS/cm					
	(20.0-199.9)mS/cm	0.1mS/cm					

SALINITY METER/ORP METER/TDS METER

● Features

1. TDS-039 is a pen type digital multifunctional TDS Meter, it can test TDS, EC and temperature. It is light and handy, widely measurement range, long life of the battery, convenient to wash, measure rapidly.
2. TDS-EC meter is a professional instrument with multi-function, can be used to testing water TDS、conductivity and the temperature.
3. ORP-286 ORP Meter is high precision pen type ORP meter, very suitable for field application; It is portable with replaceable electrode;
4. SA287 Salinity Meter can measure the concentration of the salt in the water, it is portable, accurate, convenient for outside test;



TDS-039



TDS-EC



ORP-286



SA287

Model No.	Test item	Measuring range	Accuracy	Other Technical data	Feature
TDS-039 TDS Meter	TDS	0-9990ppm	$\pm 2\% \text{F.S}$	Working voltage: 2*1.5V (AG-13 type button cell battery) Battery life: around 1000hour Working condition: 0-50 $^{\circ}$ C Calibration: by factory	Pen type High accuracy Automatic shutoff Data hold function
	EC	0-999 μ S/cm	$\pm 2\% \text{F.S}$		
	Temp	0-99 $^{\circ}$ C	$\pm 1^{\circ}$ C		
TDS-EC TDS Meter	TDS	0-9999ppm	$\pm 2\%$	ATC: 0.1-80 $^{\circ}$ C Working voltage: 4*1.5V (AG-13 type button cell battery) 3 points automatic calibration	
	ec	0-9999 μ S/cm			
ORP-286 ORP Meter	ORP	(-1999)-(+1999)mV	$\pm 5\text{mV}$	Resolution: 1mV Working Voltage: 4*1.5V (AG-13 type button cell battery) Working temperature: 0 $^{\circ}$ C-60 $^{\circ}$ C 1 point calibration	Waterproof Electrode replaceable Small size Portable
SA287 Salinity Meter	Salinity	0-100.0ppt	$\pm 2\% \text{F.S}$	Resolution: 0.1ppt ATC: 0-60 $^{\circ}$ C Working voltage: 4*1.5V (AG-13 type button cell battery) Working condition: 0-60 $^{\circ}$ C RH<=95%	ATC Pen type Replaceable sensor

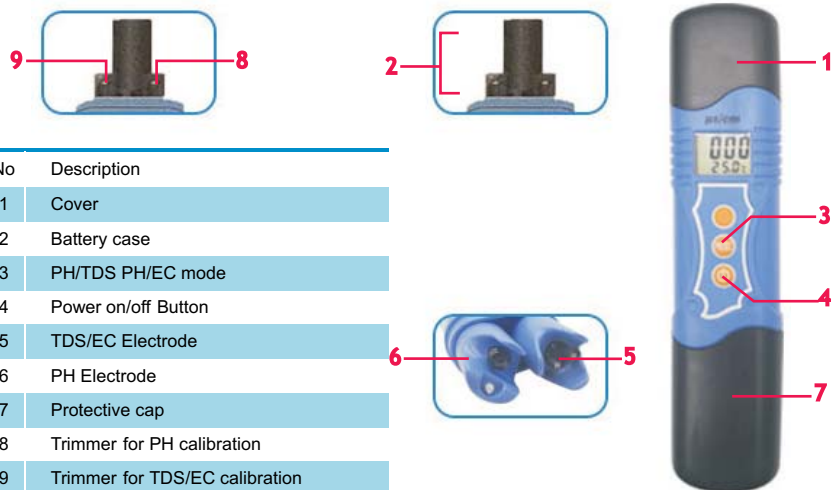


pH/EC/TDS Meter ★NEW

EC-9988/EC-9989/TDS-9982/TDS-9983

● Features

1. Economical;
2. Small size, portable;
3. High accuracy, no need any other auxiliary instruments.



No	Description
1	Cover
2	Battery case
3	PH/TDS PH/EC mode
4	Power on/off Button
5	TDS/EC Electrode
6	PH Electrode
7	Protective cap
8	Trimmer for PH calibration
9	Trimmer for TDS/EC calibration

Model No.	EC-9988	EC-9989	TDS-9982	TDS-9983
range	pH	0.00-14.00pH	0.00-14.00pH	0.00-14.00pH
	EC	0-1999μs/cm	0-19.99ms/cm	0-1999mg/L(ppm)
	TDS	0-1999μs/cm	0-19.99ms/cm	0-1999mg/L(ppm)
	Temp	0-55°C	0-55°C	0-55°C
Resolution	pH	0.01pH	0.01pH	0.01pH
	EC	1μs/cm	0.01ms/cm	1mg/L(ppm)
	TDS	1μs/cm	0.01ms/cm	1mg/L(ppm)
	Temp	0.1°C	0.1°C	0.1°C
Accuracy	pH	±0.1pH	±0.1pH	±0.1pH
	EC	±2%F.S	±2%F.S	±2%F.S
	TDS	±2%F.S	±2%F.S	±2%F.S
	Temp	±0.1°C	±0.1°C	±0.1°C
Calibration solutions	1413μs/cm	12.88ms/cm	1382ppm	6.44ppt
Automatic temperature compensation	0-50°C			



ELECTROMAGNETIC FLOWMETER ★NEW

SN-DN50

● Features

Electromagnetic Flowmeter is suitable for:
Domestic water, industrial water, raw water, ground water, urban sewage, industrial wastewater, the processed neutral pulp, pulp slurry, etc.

Model No.	SN-DN50			
Nominal diameter	15-500mm			
Degree of	±0.5%R			
Medium conductivity	≥5uS/cm, Actual conductivity ≥30uS/cm			
Nominal pressure	1.0MPa	1.6MPa	2.5MPa	4.0MPa
	SN-DN51	SN-DN52	SN-DN53	SN-DN50
Highest medium temperature	Compact type			+80°C
	Remote type	CR chloroprene rubber liner (CR)		+80°C
		Polytetrafluoroethylene lining(F4)		+120°C
		Politef lining(F46)		+120°C
Output signal	Teflon (PFA)			+180°C
	Fluorosilicone rubber(FVMQ)			+250°C
Supply voltage	4-20mA; Pulse/Frequency 2kHz(Default), 5KHz(Max)			
Communication	110/220VAC (100-240VAC), 50Hz/60Hz; 24VDC ±10%			
Electrode material	RS-485, Support standard Modbus-RTU protocol; GPRS			
Level of protection	Stainless steel 316L, Hastelloy C, Hastelloy B, titanium, tantalum, platinum			
	Remote type			IP68, IP65
	Compact type			IP65

MAGNETIC HEATED STIRRER ★NEW

MHS-T

● Features

The magnetic heated stirrers are widely used in medium and large institutions, environmental protection, scientific research, public health, epidemic prevention, petroleum, metallurgy, chemical industry, food and other units, providing an advanced laboratory tools to greatly improve the work efficiency, to facilitate scientific and technological personnel's daily work.

MHS-T	
Power	220V-240V±10%; 50/60Hz
Power	800W
Speed range	0-1500rpm (stepless speed regulation)
Stirring capacity max	5000ml
Max temperature	350°C
Plate materials	180x180mm





TURBIDITY METER

● Principle

Turbidity is the cloudiness or haziness of a fluid caused by large numbers of individual particles that are generally invisible to the naked eye, similar to smoke in air. The measurement of turbidity is a key test of water quality. A Turbidity meter is an instrument for measuring concentration of suspended particulates in a liquid. It measures suspended particulates by employing a light beam (source beam) and a light detector set to one side (often 90°) of the source beam.

● Turbidity Units

Because optical properties depend on suspended particle size, a stable synthetic material called "Formazin" with uniform particle size is often used as a standard for calibration and reproducibility. The unit is called Formazin Turbidity Unit (FTU). Nephelometric Turbidity Units (NTU) specified by United States Environmental Protection Agency is a special case of FTU, where a white light source and certain geometrical properties of the measurement apparatus are specified. (Sometimes the alternate form "nephelos turbidity units" is used.)



Model No.	Minimum Readout (NTU)	Measuring Range (NTU)	Intrinsic error	Repeatability	Zero draft	Power Supply
LH-TB01	0.1 NTU	0-200 NTU	±2.5% F.S	≤ 1.0% F.S	±1.0% F.S	DC 1.5VX5 AA battery;
LH-TB02	0.1 NTU	0-200 NTU	±2.5% F.S	≤ 1.5% F.S	±0.2 NTU	AC220V/50Hz
LH-TB1000	0.1 NTU(0-100 NTU)	0-100NTU	±6%(±2%F.S)	≤ 0.5%F.S	±0.5%F.S	AC220V/50Hz
	0.1 NTU(100-1000 NTU)	100-1000NTU				

INDUSTRY ONLINE PRODUCTS

1. Online pH ORP Controller

● Features

1. Can test pH and ORP, min. and max. control, current output and digital communication;
2. Automatic or manual temperature compensation;
3. With pH high limit and low limit alarm, double relay control, hysteresis can be adjusted freely;
4. Max. loop Resistance > 300Ω;
5. Can turn on or off voice alarm;
6. Has power saving mode, backlit LCD can be shut off automatically;
7. High performance CPU, good electromagnetism compatibility;
8. Password management, can avoid misoperation by unprofessional operator.



Model No.	Test item	Measuring range	Resolution	Accuracy	Other Technical data
SN-DG150	pH	0.00-14.00 pH	0.01 pH	±0.02 pH	Display: 128x64 dot matrix LCD Temperature compensation: 0-100°C (automatic or manual) Signal output: 4-20mA (light coupling isolation output, Max loop resistance 300Ω) Alarm out: high/low limit Normally open relay contacts Working voltage: AC 220V±10% 50Hz Power: ≤3W Working temperature: 0-60°C Air relative humidity: 85% or less Appearance size: 96 x 96 x 110 mm Open hole size: 92 x 92 mm Weight: 0.8 Kg
	ORP	(-1900)-(+1900)mV	1mV	±1mV	



2. Online EC/TDS Controller

● Features

1. Large screen liquid crystal display (LCD);
2. Screen displays alarm state and at the same time accompanied by switch ON/OFF signal output;
3. Automatic temperature compensation function: 0~100°C;
4. Communication function (optional) : RS-485 communication interface (MODBUS protocol compatible), 4-20mA current output corresponding conductivity/TDS value can be set freely;
5. Watchdog function: make sure the instrument does not crash;
6. Can restore factory setting; power-fail protection > 10 years.



Model No.	Test item	Measuring range	Resolution	Accuracy	Other Technical data
SN-CR300	EC	K=0.01 0-20.00 $\mu\text{S}/\text{cm}$; K=0.1 0-200.00 $\mu\text{S}/\text{cm}$; K=1.0 0-2000 $\mu\text{S}/\text{cm}$; K=10.0 0-20.00 mS/cm	0.01 $\mu\text{S}/\text{cm}$, 0.1 $\mu\text{S}/\text{cm}$, 0.001 mS/cm, 0.01 mS/cm	2.0 % (FS)	Automatic temperature compensation: 0-100°C Temperature compensation: NTC 10 k to 25°C as a benchmark, removing coefficient can be corrected, Control interface: two groups of ON/OFF relay contacts (not source port), divided into conductivity/TDS, photoelectric isolation temperature control signal output. Output signal isolation: photoelectric coupler isolation protection 4-20 mA output signal Relay: relay offset set arbitrary relay load 10A 220VAC Working temperature: 0-60°C Relative humidity: 90% or less Output load: load < 500 Ω (0-10 ma) Load < 750 Ω (4-20 ma) Operating voltage: 220 VAC \pm 10%, 50/60 HZ Size: 96x96x115 mm Hole size: 91x91 mm Weight: 0.8 Kg
	TDS	K=0.01 0-10ppm; K=0.1 0-100ppm; K=1.0 0-1000ppm; K=10.0 0-10000ppm	0.01ppm, 0.1ppm, 1ppm, 10ppm	2.0 % (FS)	

3. Online DO Controller

● Features

1. The large LCD display, English menu operation;
2. Multi-parameter display at the same time: the value of dissolved oxygen, temperature, output current, alarm points, etc. Intuitive and easy to read, and alarm for range over run;
3. Screen displays alarm status and accompanied by a switch ON / OFF signal output;
4. Automatic Temperature Compensation: Automatic 0°C to 60°C;
5. Communication function (optional): RS-485 communication interface (MODBUS protocol is partially compatible), 4 to 20 mA current output corresponding to the DO value can be set freely;
6. Notepad: can store 50 measurements, the user can record measurement data;
7. Hysteresis amount can be set freely to avoid frequent switching relay action;
8. Watchdog function: to ensure that the instrument will not crash;
9. Core devices from famous foreign brands;
10. Restore the factory settings. Power-fail protection > 10 years.



Model No.	Test item	Measuring range	Resolution	Accuracy	Other Technical data
SN-DO530	Dissolved oxygen	0-200.0 $\mu\text{g}/\text{L}$; 0-20.00 mg/L	0.1 $\mu\text{g}/\text{L}$; 0.01 mg/L	\pm 1.0% FS; mg/L: \pm 0.5 % FS	Automatic temperature compensation: 0-60°C Control Interface: two sets of ON / OFF relay contacts, divided into the high point, low alarm signal, optically isolated output. Isolated signal output: Optocoupler isolation to protect , 4-20mA signal output Relay: relay lag set freely, the relay load 10A 220VAC Working conditions: ambient temperature of 0-60°C, relative humidity <= 90% Output load: load < 500 Ω (0-10mA), load < 750 Ω (4-20mA) Working voltage: 220V AC, 50/60Hz size: 96 x 96 x 115 mm Hole size: 91 x 91mm Weight: 0.9Kg
	Temp	0.0-60.0°C	0.1°C	\pm 0.3°C	

OUR CUSTOMERS AND EXHIBITION



SINOTESTER CO.,LTD presented CISILE in Beijing, ARAB LAB in Dubai & ANALYTICA CHINA in Shanghai, During the exhibition, lots of customers visited our booth and gave us positive feedback about our products. Many customers visit our factory and discuss business.



PH*TDS*DO*ORP*BRIX*HONEY*CONDUCTIVITY*TURBIDITY
 TEMP*CF*SALINITY*ALCOHOL*BATTERY*PHOSPHATE*NITRITE
 ASCORBIC*LEAD*MERCURY*CHLORINE*AMMONIA*PH*PDS
 PH*TDS*DO*ORP*BRIX*HONEY*CONDUCTIVITY*TURBIDITY
 TEMP*CF*SALINITY*ALCOHOL*BATTERY*PHOSPHATE*NITRITE
 ASCORBIC*LEAD*MERCURY*CHLORINE*AMMONIA*PH*PDS
 PH*TDS*DO*ORP*BRIX*HONEY*CONDUCTIVITY*TURBIDITY
 TEMP*CF*SALINITY*ALCOHOL*BATTERY*PHOSPHATE*NITRITE
 ASCORBIC*LEAD*MERCURY*CHLORINE*AMMONIA*PH*PDS
 PH*TDS*DO*ORP*BRIX*HONEY*CONDUCTIVITY*TURBIDITY
 TEMP*CF*SALINITY*ALCOHOL*BATTERY*PHOSPHATE*NITRITE
 ASCORBIC*LEAD*MERCURY*CHLORINE*AMMONIA*PH*PDS

SINOTESTER CO.,LTD

Ningbo Better Technology CO.,LTD

Ningbo Branch: 3/F Jiaofu Building, Middle No.928 Songjiang Road, Yinzhou Dis. Ningbo City, Zhejiang, China

Hangzhou Branch: 2/F, No.5 Building of Science park, No.63 Jiuhuan Road, Jiubao Town, Jianggan District, Hangzhou city, Zhejiang, China

Tel: 86+574-55111964/55123801 Fax: 86+574-55123802

Email: sales@sinotester.com

Website: www.sinotester.com

