

09. SHAKER



401L Stackable Incubator Shakers	103
Stackable Incubator Shakers	107
Chest-Type Incubator Shakers.....	108
Bench-Top Incubator Shakers	109
Low Profile Bench-Top Incubator Shakers	110
Single Door Double Layers Upright Incubator Shakers	111
Double Doors Double Layers Upright Incubator Shakers.....	112
Accessories	113
Water Bath Shaker	115
Wrist Shaker	116
Orbit Shaker.....	117
Mini Orbital Shaker	119
Multi-purpose Shaker.....	120
Microplate Shaker.....	121
Accessories	122

NEW!

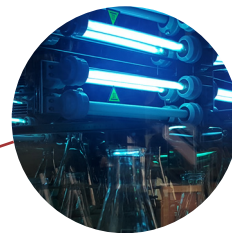
Programmable Stackable Incubator Shakers

(with or without CO₂ Controller)

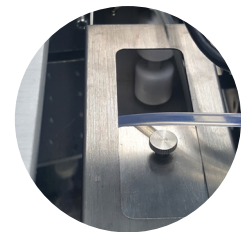
RDS6 series, a line of large incubator shakers up to 1 meter in size.
Triple Eccentric Drive for better operation and reliability.

- Large capacity, 401 liter and stackable up to 3 levels.
- $\pm 0.5^{\circ}\text{C}$ Temp uniformity.
- Triple Eccentric Drive with max. speed 300rpm, stable and extremely quiet. (<53dB)

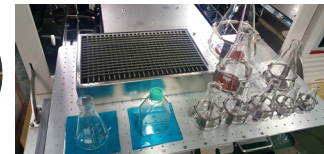
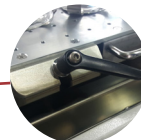
103



- UV lamp sterilization



- 10% ~ 95% RH alarm control with automatic water supply system.



- Sliding rack and easy and simple for test sample loading.



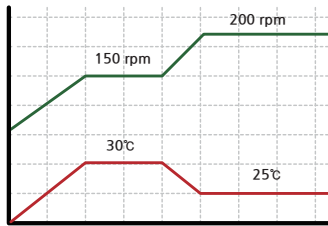
- Magnetic detachable pump



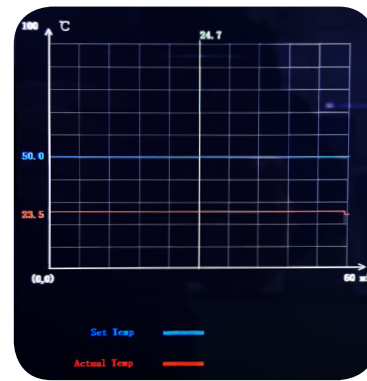
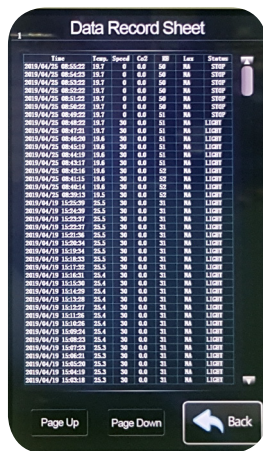
- Test sample loading and incubation up to max. 20kg.



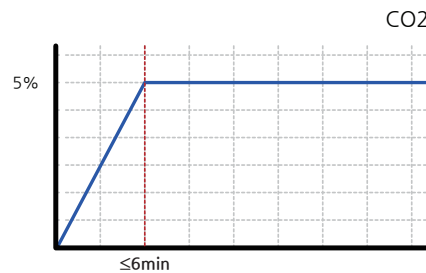
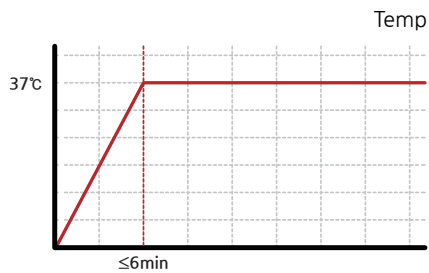
- Wide shaker in 50mm Orbit Diameter (IS-RDS6C5, 5T)



- Programmable up to 12 programs (Temp, Speed)
 - Fix/Program mode selectable
- Data Download with USB drive (stored in Excel file)



- 10" Large LCD color Touch control panel enables to monitor the operation and alarm status.
- Curve Display of Temperature, speed, CO₂ and Humidity.



- Recovery Time after Open Door 30sec



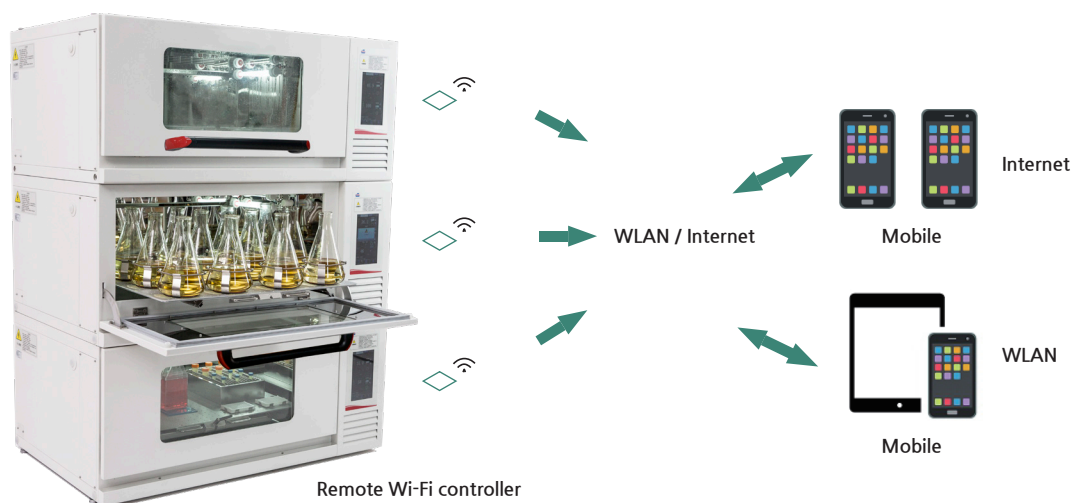
- Fridge: Refrigerator activates
- Heat: Heater activates

- Heater and Refrigerator activate and provide High precise operation (±0.5°C Temp. uniformity, ±0.1% CO₂ precise control)

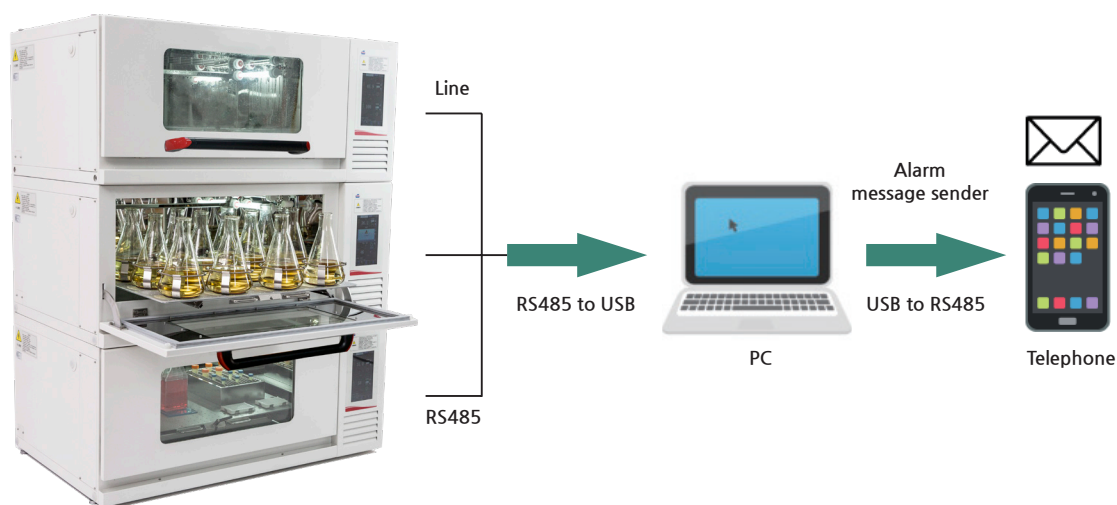
Model	IS-RDS6	IS-RDS6T	IS-RDS6C	IS-RDS6C5	IS-RDS6C5T
Platform Dimensions	900x560mm / 35.43x22.05"				
Max. Capacity	Clamp Capacity: 50mlx135 / 100mlx60 / 150mlx60 / 200mlx60 / 250mlx60 / 500mlx34 / 1000mlx22 / 2000mlx15 / 3000mlx12 Sticky Mat: 50mlx187 / 100mlx112 / 150mlx104 / 200mlx84 / 250mlx77 / 500mlx40 / 1000mlx28 / 2000mlx15 / 3000mlx15 / 5000ml(Thomson)x6				
Capacity	401L				
Max. Load	20kg				
Temp. Range	Room Temp -18℃~60℃ (Lowest Temp. is 4℃)				
Temp. Accuracy	±0.1℃				
Temp. Uniformity	±0.5℃ (@37℃)				
Speed	30~300rpm				
Speed Accuracy	±1rpm				
Orbit Diameter	φ26mm			φ50mm	
CO ₂ Sensor	NA		IR		
CO ₂ Control Range	NA		0~20%		
CO ₂ Control Accuracy	NA		±0.1%		
Recover Time after Open Door 30s on Temp.	NA		≤6min (@37℃)		
Recover Time after Open Door 30s on CO ₂	NA		≤6min (@5%)		
RH Type	NA		Evapor Naturally		
Max. Humidity	NA		95%		
Programing Numbers	12 Sections				
Illumination	Both of Side Lamps				
Disinfection	Both of Side UV Lamps				
Door Open Direction	Downward	Upward	Downward	Downward	Upward
Date Curve Display	Temp. Curve, Speed Curve		Temp. Curve, Speed Curve, CO ₂ Curve, RH Curve		
Display	10" Color Capacitance Touch Screen				
Display the Date	In 7 days				
Date Store Types	More than 912 days				
Date Store Time	1min				
Date Store Types	Time, Temp, Speed, Machine Status		Time, Temp, Speed, CO ₂ , RH, Machine Status		
Third Platform High	1496mm				
Noise Level	≤53dB (In Refrigerating)				
Water Sparge Resistant	Yes				
Auto-run after Power Recovery	Yes				
Heat Power	≤850W				
Cool Power	70~180W				
Power	≤950W		≤1000W		
Power Supply	AC 220V±22V, 50Hz / 60Hz				
Drive Train	Triple Eccentric Drive				
RH Control	NA		10%~95% Above RH		
Dimension External (W×D×H)	1400x886x680mm / 55.12x34.88x26.77"	1400x886x728mm / 55.12x34.88x28.66"	1400x886x680mm / 55.12x34.88x26.77"		1400x886x728mm / 55.12x34.88x28.66"
Dimension Internal (W×D×H)	1005x690x330mm / 39.57x27.17x12.99"				
Net Weight	290kg		295kg		

*Please refer to page 113 to 114 for accessories.

Remote Monitor & Control System & APP



Remote Monitor & Control System & RS485



It is a wireless monitoring software for mobile phones used in the Internet or local area network to monitor and control the incubating shaker. All parameters of a unit can be monitored and controlled by a mobile phone, and multiple mobile phones can also monitor and control one or more machines. It is very suitable for timely monitoring of culture conditions which need higher culture environment. You can check the history data in the mobile phone, according to the culture effect of historical data, so you can optimize the latter culture parameters.

- One cell phone can monitor multiple shakers at the same time.
- More than two mobile phones can monitor one or more shakers at the same time.
- Mobile phone can monitor and control the temperature, speed, humidity, CO₂, light and other parameters of the shaker through the LAN and the Internet.
- Mobile phone can program to the machine and let the unit run as several section programs (the maximum is 12).
- Mobile phone can receive alarm information timely, and the alarm can be disposed.
- Mobile phone can view historical data, including temperature, speed, humidity, CO₂, light, and other historical parameters.

Stackable Incubator Shakers

(with or without CO₂ Controller)



<IS-RDS4>



<IS-RDS3C>



<Option: IS-A29>

<IS-RDS3>



<IS-RDS3L>

Stackable incubator shakers are the ideal choice for optimizing laboratory space without compromising the advantages of performing large capacity incubations. The products are designed with sliding platforms and light controller for easy of access to samples.

Model	IS-RDS3	IS-RDS3C	IS-RDS3L	IS-RDS4
Speed	30~300rpm			
Speed Precision	±1rpm			
Orbit Diameter	Φ26mm / 1.02"			
Maximum Capacity	50mlx84/100mlx42/150mlx42/ 200mlx40/250mlx40/500mlx24/ 1000mlx15/2000mlx12/3000mlx8/5000mlx6			50mlx84/100mlx42/ 150mlx42/200mlx40/ 250mlx40/500mlx24/ 1000mlx15/2000mlx12
Platform Dimensions	740mmx500mm / 29.13x21.65"			
Number of Platforms	1Piece / Accessories available			
Temp. Range	Ambient -15°C~60°C(Low Limit:4°C)			
Temp. Sensitivity	0.1°C			
Temp. Uniformity	±0.3°C(@37°C)			
CO ₂ Sensor	N/A	Infrared		N/A
CO ₂ Control Sensitivity	N/A	0~20%		N/A
CO ₂ Concentration Indicator	N/A	Digital Display		N/A
Light Intensity	N/A		0~20000LX (9 step)	N/A
Automatic Defrost	Yes			
Display	LCD			
Timer	0~999 Hours			
Dimension External (W×D×H)	1240x777x670mm / 48.82x30.59x26.38"			1240x777x570mm 48.82x30.59x22.44"
Dimension Internal (W×D×H)	840x590x483mm / 840x590x483"			840x590x383mm 33.07x23.23x15.08"
Power	<1100W		<1300W	<1100W
Power Supply	220V, 60Hz			
Weight	220 kg (Single unit)			200 kg (Single unit)
Max. Height	2M			1.7M

*Please refer to page 113 to 114 for accessories.

Chest-Type Incubator Shakers



<IS-RDH2>

The design of the chest-type, top cover incubator with a large single layer platform area affords reliable sealing, ease of sample access and high visibility. It is suitable for small scale to medium scale experiments and production.

Model	IS-RDH1	IS-RSH1	IS-RDH2	IS-RSH2
Speed	30~300 rpm			
Speed Precision	±1rpm			
Orbit Diameter	Φ26mm / 1.02"			
Maximum Capacity	50mlx120/100mlx60/ 150mlx58/200mlx58/250mlx58/ 500mlx35/1000mlx18/2000mlx14		50mlx120/100mlx60/ 150mlx58/200mlx58/ 250mlx58/500mlx35/ 1000mlx18/2000mlx14/ 3000mlx8/5000mlx6	
Platform Dimensions	910mmx510mm / 35.83x20.08"			
Number of Platforms	1Piece / Accessories available			
Temp. Range	Ambient-15°C~60°C (Low Limit:4°C)	Ambient+5°C~60°C	Ambient-15°C~60°C (Low Limit:4°C)	Ambient+5°C~60°C
Temp. Sensitivity	0.1°C			
Temp. Uniformity	±0.5°C(@37°C)			
Automatic Defrost	Yes	N/A	Yes	N/A
Display	LCD			
Timer	0~999 Hours			
Dimension External (W×D×H)	1200x700x850mm / 47.24x27.56x33.46"		1200x700x960mm / 47.24x27.56x37.80"	
Dimension Internal (W×D×H)	960x560x350mm / 37.80x22.05x13.78"		960x560x420mm / 37.80x22.05x16.54"	
Power	<1200W	<1000W	<1200W	<1000W
Power Supply	220V, 60Hz			
Weight	230 kg	220 kg	240 kg	230 kg

*Please refer to page 113 to 114 for accessories.

Bench-Top Incubator Shakers



<IS-RSD3>

Ergonomically designed with curved glass window and cover, it has an appealing look and large viewing area for clear visibility. The product is suitable for small scale experiments.

Model	IS-RDD3	IS-RSD3
Speed Range	30~400 rpm	
Speed Precision	±1rpm	
Orbit Diameter	Φ26mm / 1.02"	
Maximum Capacity	50mlx42/100mlx25/150mlx24/200mlx20/250mlx20/500mlx12/1000mlx8	
Platform Dimensions	450mmx400mm / 17.72x15.75"	
Number of Platforms	1Piece	
Temp. Range	Ambient-15°C~60°C (Low Limit:4°C)	Ambient+5°C~60°C
Temp. Sensitivity	0.1°C	
Temp. Uniformity	±0.5°C(@37°C)	
Automatic Defrost	Yes	N/A
Display	LCD	
Timer	0~999 h	
Dimension External (W×D×H)	700x650x620mm / 29.92x25.59x24.41"	
Dimension Internal (W×D×H)	500x460x350mm / 19.69x18.11x13.78"	
Power	<700W	<550W
Power Supply	220V, 60Hz	
Weight	110 kg	100 kg

*Please refer to page 113 to 114 for accessories.

Low Profile Bench-Top Incubator Shakers



This model is designed with small footprint for standard bench top applications. Its sliding platform facilitates easy sample handling. The tempered glass door provides clear visibility.

Model	IS-RSDA
Speed Range	30~300rpm
Speed Precision	±1rpm
Orbit Diameter	Φ26mm / 1.02"
Maximum Capacity	50mlx28/100mlx15/150mlx11/200mlx10/250mlx9/500mlx4/1000mlx2
Platform Dimensions	350mmx300mm / 13.78x11.81"
Number of Platforms	1Piece
Temp. Range	Ambient+5°C~80°C
Temp. Sensitivity	0.1°C
Temp. Uniformity	±0.5°C(@37°C)
Automatical Defrost	Yes
Display	LED
Timer	0~999 h
Dimension External (W×D×H)	440x535x550mm / 17.32x21.06x21.65"
Dimension Internal (W×D×H)	392x330x330mm / 15.43x12.99x12.99"
Power	<750W
Power Supply	220V, 60Hz
Weight	50 kg

*Please refer to page 113 to 114 for accessories.

Single Door Double Layers Upright Incubator Shakers



<IS-RDV1>

The body of the instrument is divided into 3 sections from top to bottom. There are two layers of platforms to maximize space usage. Large glass window provides high visibility. This product is suitable for medium scale experiments and production.

Model	IS-RDV1	IS-RSV1
Speed Range	30~300rpm	
Speed Precision	±1rpm	
Orbit Diameter	Φ26mm / 1.02"	
Maximum Capacity	50mlx90/100mlx42/150mlx42/200mlx39/250mlx39/500mlx23/1000mlx14	
Platform Dimensions	494x348mm / 19.45x13.70"	494x333mm / 19.45x13.11"
Number of Platforms	2Piece	
Temp. Range	Ambient-15°C~60°C (Low Limit:4°C)	Ambient+5°C~60°C
Temp. Sensitivity	0.1°C	
Temp. Uniformity	±0.5°C(@37°C)	
Automatic Defrost	Yes	N/A
Display	LCD	
Timer	0~999h	
Dimension External (WxDxH)	700x650x1320mm / 27.56x25.59x51.97"	
Dimension Internal (WxDxH)	598x424x676mm / 23.54x16.69x26.61"	
Power	<1000W	<600W
Power Supply	220V, 60Hz	
Weight	150 kg	140 kg

*Please refer to page 113 to 114 for accessories.

Double Doors Double Layers Upright Incubator Shakers



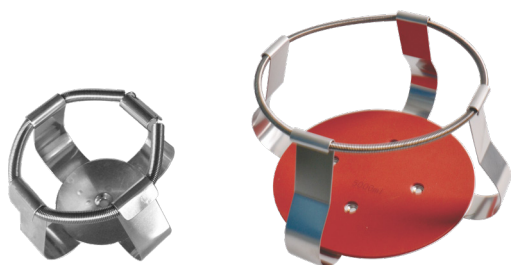
<IS-RDV3>

The product has 2 doors and 2 windows at appropriate heights for easy access and visibility. The large double platforms can accommodate large quantity of flasks and high samples. It is suitable for medium scale experiments and production.

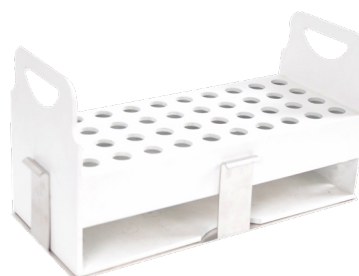
Model	IS-RDV3	IS-RSV3	IS-RDV35	IS-RSV35
Speed	30~300rpm		30~250rpm	
Speed Precision	±1rpm			
Orbit Diameter	Φ26mm / 1.02"		Φ50mm / 1.97"	
Maximum Capacity	50mlx218/100mlx112/ 150ml101/200mlx101/250mlx101/ 500mlx54/1000mlx35/2000mlx26		50mlx206/100mlx104/ 150mlx95/200mlx90/250mlx90/ 500mlx50/1000mlx30/2000mlx22	
Platform Dimensions	530x890mm/510x890mm		510x825mm/510x890mm	
Number of Platforms	2Piece			
Temp. Range	Ambient-15°C~60°C (Low Limit:4°C)	Ambient+5°C~60°C	Ambient-15°C~60°C (Low Limit:4°C)	Ambient+5°C~60°C
Temp. Sensitivity	0.1°C			
Temp. Uniformity	±0.5°C(@37°C)			
Automatic Defrost	Yes	N/A	Yes	N/A
Display	LCD			
Timer	0~999h			
Dimension External (W×D×H)	1102x810x1458mm / 43.39x31.89x57.40"			
Dimension Internal (W×D×H)	1000x590x800mm / 39.37x23.23x31.50"			
Power	<1300W	<850W	<1300W	<850W
Power Supply	220V, 60Hz			
Weight	290 kg	260 kg	300 kg	270 kg

*Please refer to page 113 to 114 for accessories.

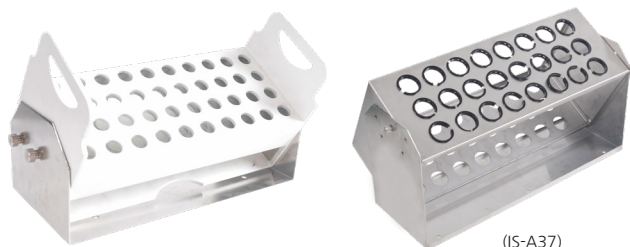
Accessories



Model	Part Number	Specifications	Note
Flask Clamp	IS-A1	50ml	Made of polished stainless steel sheet. They can be fixed on any platform of all models of incubator shakers.
	IS-A2	100ml	
	IS-A3	150ml	
	IS-A4	200ml	
	IS-A5	250ml	
	IS-A6	500ml	
	IS-A7	1000ml	
	IS-A8	2000ml	
	IS-A9	3000ml	
	IS-A10	5000ml	
IS-A50	25ml		



Model	Part Number	Specifications	Note
Test Tube Rack	IS-A11	40xØ14mm (0.55")	Made of stainless steel and high grade ABS plastic material. Compatible with all of Incubator Shaker
	IS-A12	40xØ16mm (0.63")	
	IS-A23	40xØ18mm (0.71")	
	IS-A24	27xØ22mm (0.87")	Dimension External (WxDxH): 262x112x140mm (10.31x4.41x5.51")
	IS-A42	21xØ30mm (1.18")	

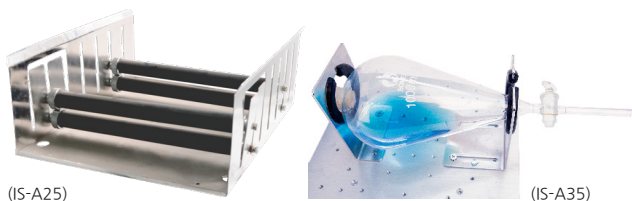


(IS-A37)



Model	Part Number	Specifications	Note
Adjustable Test Tube Rack	IS-A20	40xØ14mm (0.55")	Made of stainless steel and high grade ABS plastic material. Compatible with all of Incubator Shaker.
	IS-A21	40xØ16mm (0.63")	
	IS-A30	40xØ18mm (0.71")	
	IS-A31	27xØ22mm (0.87")	Dimension External (WxDxH): 267x125x172mm (10.51x4.92x6.77")
	IS-A32	27xØ30mm (1.81")	
	IS-A37	24xØ30mm (1.81")	Made of stainless steel, rack for 300mm long tubes. Dimension External (WxDxH): 267x125x172mm (10.51x4.92x6.77")

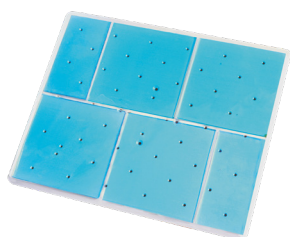
Model	Part Number	Specifications	Note
Multifunction Spring Platform	IS-A19	WxDxH: 165x165x80mm (13.78x9.45x3.15")	For all shakers.
	IS-A27	WxDxH: 350x240x80mm (13.78x9.45x3.15")	
	IS-A22	WxDxH: 450x400x80mm (17.72x15.75x3.15")	For all of incubator shakers except IS-RSDA.
	IS-A14	WxDxH: 428x295x80mm (16.85x11.61x3.15")	
	IS-A39	WxDxH: 720x440x80mm (28.35x17.32x3.15")	For IS-RDS3, RDS4
	IS-A48	WxDxH: 840x440x80mm (33.07x17.32x3.15")	For chest-type incubator shakers.
			Made of stainless steel. Can be fixed onto shaking platform.



Model	Part Number	Specifications	Note
Fixture for Separating Funnel	IS-A25	WxDxH: 355x402x153mm (13.98x15.83x6.02")	Used for separating funnel with volume 5000ml.
	IS-A35	N/A	Used for separating funnel with volume greater than 500ml.



Model	Part Number	Specifications	Note
Infusion Bottle Clamp	IS-A33	500ml	Made of stainless steel. Can be fixed on all platforms of incubator shakers.
	IS-A34	1000ml	



Model	Part Number	Specifications	Note
Sticky Pad	IS-A47	WxD:140x140mm (5.51x5.51")	Use for all shaker, wipe with water, dry for few minutes, the mat will be self-adhesive on surface.



Model	Part Number	Specifications	Note
Rack for Stackable Incubator Shakers	IS-A29	WxDxH: 948x630x225mm (37.32x24.80x8.86")	Support stackable incubator shakers (up to two units).



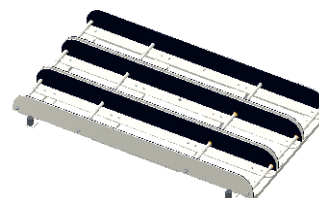
Model	Part Number	Specifications	Note
Flask Holder	IS-A26	5000ml	Hold 5000ml Flask. (For IS-RDS, IS-RDS3C, IS-RDH2, IS-RSH2)



Model	Part Number	Specifications	Note
96-Well Microplate Holder	IS-A13	WxD: 136x95mm (5.35x3.74")	Can be fixed on any platform of incubator shakers.



Model	Part Number	Specifications	Note
Universal Spring Platform	WBA30	WxDxH: 370x240x180mm (14.57x9.45x7.09")	Previous Model: SY-2330-03A, Maximum Capacity:1



Model	Part Number	Specifications	Note
Deep Well Plate Clamp	IS-A61	WxDxh: 780x450x84mm (30.71x17.72x3.31")	

Water Bath Shaker



SY-2230 reciprocal bath shaker is a microprocessor-controlled unit with digital LED display. Its adjustable speed range of 20-200 rpm permits gentle as well as vigorous agitation and aeration. The stainless steel construction, maintenance free brushless motor, PTC heating units and other features guarantee its continuous, heavy duty operation. The product is built with low water level and over heating protection as well as alarm features so that samples are protected if the temperature exceeds the maximum limit.

115

Model	SY-2230
Temp. Range	(Ambient)+5°C~99°C
Temp. Fluctuation	±0.3°C
Speed	20~200rpm
Timer	0~99.9h
Water Tank Capacity	27L
Drainage	Yes
Tank Internal Dimensions (WxDxH)	528x308x226mm / 20.79x12.13x8.90"
Dimension External (WxDxH)	750x380x326mm / 29.53x14.96x12.83"
Max. Power Consumption	1400W
Power Supply	220V, 60Hz
Weight	30 kg
Oribit Diameter	25.4mm / 1"
Overheating Protection	Yes
Water level Protection	Yes
Audial and Visual Alarm	Yes

Standard Accessory

One Platform for Flask Clamp and Flask Clamps 250mlx6

Accessories

Name	Part Number	Maximum Capacity	Picture	Note
Clear-view Water Bath Cover	SY-2230-01	1		Transparent Area:474x120mm
Tubes Rack A	SY-2230-02A	3		Φ22mm
Tubes Rack B	SY-2230-02B	3		Φ18mm
Tubes Rack C	SY-2230-02C	3		Φ16mm
Platform for Tubes Rack	SY-2230-02D	1		N/A
Tubes Rack E	SY-2230-02E	3		Φ30mm
Universal Spring Platform	WBA30	1		370x240x180mm
100ml Flask Clamp	IS-A2	15		N/A
150ml Flask Clamp	IS-A3	15		
250ml Flask Clamp	IS-A5	10		
500ml Flask Clamp	IS-A6	6		
1000ml Flask Clamp	IS-A7	4		
Platform for Flask Clamp	SY-2230-03F	1		

NEW!

Wrist Shaker

Adjustable Speed and Angle Wrist Shaker



The Wrist Shaker applies widely to the environmental and safety, textiles, cosmetics, food and beverage, chemical, medical, biotech, and pharmaceutical areas.

- Adjustable angle between 1-15 degree;
- Adjustable side arm clamps can accommodate up to 8 flasks, 500ml or smaller;
- Load capacity of up to 4.5kg with overload protection;
- Designed to simulate the back and forth motion of the human wrist;
- Can be used in room temp between 5 to 40 °C.

Model	OS-08
Speed Range	Variable speed: 50~450 rpm
Fit Flask / Cup / Tube	8 x 500 ml Flask (or bottle/or tube) with Diameter between 6 mm to 51 mm.
Display	LED
Timer	0~99h 59min
Max. Load	4.5 kg
Mixing Angle	1~15° Adjustable
Dimension External (W×D×H)	425x376x413mm / 16.73x14.80x16.26"
Power Supply	220V, 2A, 100W, 50Hz
Weight	51kg

- **Standard Accessory**
OSA25

Accessories



Model	Part Number	Specifications
Side Arm Assembly	OSA25 (Optional)	2x Clamps with 4 Position Side Arm Assemble
	OSA26 (Optional)	2x Clamps with 6 Position Side Arm Assemble
	OSA27 (Optional)	2x Clamps with 8 Position Side Arm Assemble



Model	Part Number	Specifications
Side Arm	OSA28 (Optional)	2x Vessel Clamp Assembly



Model	Part Number	Specifications
Side Arm Rod	OSA29 (Optional)	470mm / 18.50"
	OSA30 (Optional)	350mm / 13.78"
	OSA31 (Optional)	230mm / 9.05"

Orbital Shaker



<SYC-2102>

The Orbital Shaker may be used for several applications including culturing microbes, and general mixing. A spring platform is an available accessory which can handle multiple flasks. Our Orbital Shaker is designed and built for a heavy workload, and provides continuous shaking with no vibration or heat output. Our Orbital Shaker can be placed into a standard incubator, converting the incubator into a shaking incubator.

- Digital control and LED display
- Low noise level;
- Gentle speed up and slow down;
- Automatic recovery from power outage;
- Includes standard platform with non-skid mat.

Model	SYC-2102
Rotation Method	Circular Orbit, 26mm dia.
Speed	30~300rpm
Time Range	0~99 hours(0 represents no setting, run continuously)
Platform Dimensions	400x400mm / 15.75x15.75"
Capacity	1000mlx6/2000mlx4
Max. Workload	10 kg
Dimension External (WxDxH)	432x535x190mm / 17.01x21.06x7.48"
Relative Humidity	<80%
Ambient	5°C~40°C
Max. Power Consumption	85 W
Power Supply	220V, 60Hz
Weight	38 kg

• **Standard Accessory**

Standard platform with non-skid mat

Accessories for High Profile Shaker (SYC-2102)



Model	Part Number	Specifications	Max. Number
Aluminum Platform	OSA01 (Previous Model:SYC2102-A)	WxDxH:400x400x5mm (15.75x15.75x0.2")	1



Model	Part Number	Specifications	Max. Number
Universal Platform with 4 adjustable bars	OSA02 (Previous Model: SYC2102-B)	WxDxH:417x402x146mm (16.42x15.83x5.75")	1



Model	Part Number	Specifications	Max. Number
Universal Platform with 2 adjustable bars for large flask	OSA03 (Previous Model:SYC2102-C)	WxDxH:417x417x207mm (16.42x16.42x8.15")	1



Model	Part Number	Specifications	Max. Number
Bars	OSA04 (Previous Model:SYC2102-D)	L=400mm (15.75") φ= 28mm(1.1")	4

Universal Accessories:

Name	Part Number	Name	Part Number
Flask Clamp	IS-A1	Test Tube Rack	IS-A11
	IS-A2		IS-A12
	IS-A3		IS-A23
	IS-A4		IS-A24
	IS-A5	Adjustable Test Tube Rack	IS-A20
	IS-A6		IS-A21
	IS-A7		IS-A30
	IS-A8		IS-A31
	IS-A9		IS-A37
	IS-A10		IS-A19
96-Well Microplate Holder	IS-A13	Mini Universal Spring Platform	IS-A27
Infusion Bottle Clamp	IS-A33	Separatory Funnel Fixture	IS-A35
	IS-A34	Sticky Pad	IS-A47

Mini Orbital Shaker



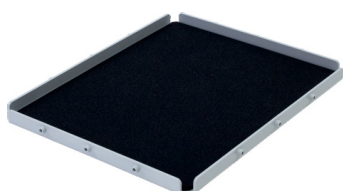
Orbital shaker is based on the needs of modern biological cell culture and development. It is designed with closed-loop electronic control system, and it processes high-precision speed control capability. It can be used for mixing and cell culture of small capacity reagents. A variety of optional accessories can meet the different experiments' needs. It can be widely used in a variety of fields, such as biology, chemistry, cell culture, fermentation, hybridization and enzyme, tissue research (such as gel electrophoresis fixing, Maas blue staining, bleaching, dyeing silver nitrate fixing, staining and development) and various bacteria cultures, stains washing and general mixing which have higher requirements of oscillation frequencies.

- Space saving design that includes variable speed and a timer function;
- A wide variety of accessories are available to meet the demands of any researcher;
- Brushless DC motor provides a smooth start and low noise;
- Automatic recovery from power outage.

Model	OS-03U
Orbit Size	Φ20mm
Speed Range	30~300rpm
Time Range	0~99h 59min
Platform Dimensions	307x267mm / 12.09x10.51"
Maximum Capacity	15x50ml/12x100ml / 12x150ml or 200ml / 12x250ml/4x500ml / 4x1000ml flasks / Small Tube Racks
Power	7W
Max. Load	2.5 kg
Display	LCD
Dimensions (WxDxH)	355x240x123mm / 13.98x9.45x4.84"
Relative Humidity	<80%
Ambient	5℃~40℃
Weight	12.5 kg

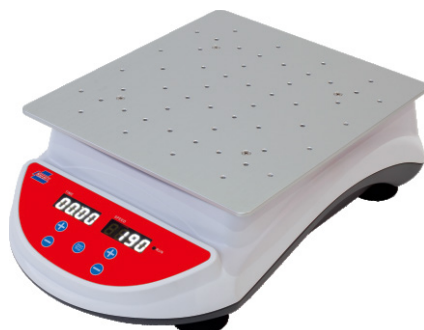
- **Standard Accessory**
OSA17

Accessories



Model	Part Number	Specifications
Flat Shelf with Rubber Mat	OSA17	WxDxH: 327x289x22mm (12.87x11.38x0.87")

Multi-purpose Shaker



Multi-purpose shaker is a staple of many laboratories.

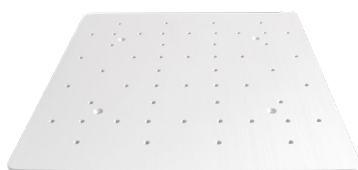
The OS-6U can be used with flask clamps or directly with the platform and sticky mat to satisfy many life science, pharmaceutical, biotechnology and biomedical engineering applications.

- Variable shaking speed: 50~450rpm.
- Holds up to 4.5kg, and up to 4 pieces of 140mm x 140mm sticky mat.
- Automatic load balancing system.
- Continuous or timed operation with; automatic switch-off.
- Maximum flexibility with many options of interchangeable accessories.
- Simple set up and easy to operate.
- Continue to run by last set speed and the remaining time when the power recovered.
- 5~40°C operating temp range, which allows for use in cold rooms and incubators.

Model	OS-06U
Speed Range	50~450rpm
Speed Accuracy	±1rpm(@≤100rpm), ±1%(@>100rpm)
Orbit Diameter	Φ10mm / 0.39"
Max.Load	4.5 kg (6x250 ml flasks)
Timer	0~99h 59min
Platform Dimensions	310x284mm / 12.20x11.18"
Display	LED
Max.Capacity	20x25/50ml,8x100/250ml,6x500ml, 4x1000ml,2x2000/3000ml,1x5000ml
Ambient	5°C~40°C
Dimension External (L×W×H)	440x296x129mm / 17.32x11.65x5.08"
PowerSupply	220V, 60Hz
Weight	15 kg

• **Standard Accessory**
OSA21

Accessories



Model	Part Number	Specifications	Note
Universal (Aluminum) Platform	OSA21	WxD: 310x284mm (12.20x11.18")	For OS- 06U

Microplate Shaker



Microplate shaker can accommodate all SBS format plates, PCR, tissue culture & HTS.
Great for mixing applications requiring specific speeds or times.

- Variable shaking speed: 150~1000rpm;
- Quick and easy fitting of any standard-depth multiwell plates;
- Continuous or timed operation, with automatic switch off;
- Display will show last used settings, even after power has been turned off;
- Continue to run by last set speed and the remaining time when the power recovered;
- Operating temperature 5°C~40°C allows for use in cold rooms or incubators;
- Holds two or four microplates;
- Easy-to-use electronic timer ensures accurate count-down and repeatability of time sensitive incubations

Model	OS-07U
Speed Range	150~1000rpm
Speed Accuracy	±1% (@≤299rpm), ±2% (@>299rpm)
Orbit Diameter	φ2.5mm / 0.10"
Max.Load	4 kg
Timer	0~99h59min
Platform Dimensions	275x235x12mm / 10.83x9.25x0.47"
Display	LED
Ambient	5°C~40°C
Dimension External (W×D×H)	296x440x151mm / 11.65x17.32x5.94"
PowerSupply	220V, 60Hz
Weight	15 kg

- **Standard Accessory**
OSA13x6

Accessories

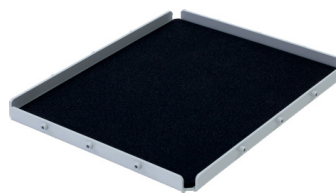


Model	Part Number	Specifications	Note
96-well Microplate Holder	OSA13		For OS- 07U

Accessories



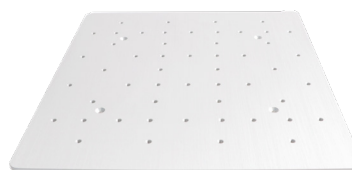
Model	Part Number	Specifications	Note
Nonslip Rubber Mat	OSA16	WxD: 306x246mm (12.05x9.69")	For OS- 06U



Model	Part Number	Specifications	Note
Flat Shelf with Rubber Mat	OSA17	WxDxH: 327x289x22mm (12.87x11.38x0.87")	For OS- 06U



Model	Part Number	Specifications	Note
Universal Platform with Adjustable Bars	OSA20	WxDxH: 306x303x145mm (12.05x11.93x5.71")	For OS- 06U



Model	Part Number	Specifications	Note
Universal (Aluminum) Platform	OSA21	WxD: 310x284mm (12.20x11.18")	For OS- 06U



Model	Part Number	Specifications	Note
Rubber Strips	NSA01	WxD: 180x7mm (7.09x0.28")	For OS- 07U



Model	Part Number	Specifications	Note
96-well Microplate Holder	OSA13		For OS- 07U



Model	Part Number	Specifications	Note
Large Shelf	OSA14	WxDxH: 292x275x12mm (11.50x10.83x0.47")	For OS- 07U



Model	Part Number	Specifications	Note
Large Shelf with Clamp Assembly	OSA15	WxDxH: 292x275x25mm (11.50x10.83x0.98")	For OS- 07U

Model	Part Number	Specifications
Flask Clamp	IS-A1	50ml
	IS-A2	100ml
	IS-A5	250ml
	IS-A6	500ml
	IS-A7	1000ml
	IS-A8	2000ml
	IS-A9	3000ml
	IS-A10	5000ml
Shelf-Adhesive Silicon Mat	IS-A47	WxD:140x140mm (5.51x5.51")

Model	Part Number	Specifications
96-Well Microplate Holder	IS-A13	WxD:136x95mm (5.35x3.74")
Separatory Funnel Fixture	IS-A35	
Test Tube Rack	IS-A11	40xØ14mm(0.55")
	IS-A12	40xØ16mm(0.63")
Adjustable Test Tube Rack	IS-A20	40xØ14mm(0.55")
	IS-A21	40xØ16mm(0.63")
Infusion Bottle Clamp	IS-A33	500ml
	IS-A34	1000ml