

U1700 Series handheld capacitance and LCR meters

Save time with auto-ID and one-button access

- Auto-identification of L, C and R; and detailed component analysis with DCR, Z, ESR, D, Q and θ functions.
- Tolerance and compare modes for quick component sorting
- One-button access to measurements



U1733C

| | U1701B | U1731C | U1732C | U1733C |
|---------------------|--|------------------------------|-------------------------------|--|
| Counts | 11,000 | 20,000 | 20,000 | 20,000 |
| Capacitance | 1000 pF to 199.99 mF | 200 pF to 20 mF | 20 pF to 20 mF | 20 pF to 20 mF |
| Inductance | N/A | 200 μ H to 2000 H | 20 μ H to 2000 H | 20 μ H to 2000 H |
| Resistance | N/A | 2 Ω to 200 M Ω | 2 Ω to 200 M Ω | 2 Ω to 200 M Ω |
| Frequency | N/A | 100 Hz, 120 Hz, 1 kHz | 100 Hz, 120 Hz, 1 kHz, 10 kHz | 100 Hz, 120 Hz, 1 kHz, 10 kHz, 100 kHz |
| Additional features | Dual display, min./max./avg. recording, data logging to PC | | | |

Handheld clamp meters

Save money without compromising safety or convenience

Use clamp meters to measure high voltage and current (up to 1000V and 1000A) and avoid the need to disconnect high current cables. The clamp meters have built-in DMMs, with lower resolutions than typical dedicated DMMs, to be used for preventative maintenance and quick verifications.

- Large 2-inch jaw size (U1210 Series); LED light, wire separator and hook to grab the right wire (U1190 Series)
- Includes DMM capabilities: resistance, capacitance, frequency and temperature
- CAT IV 600 V and CAT III 1000 V safety ratings (U1210 Series)



U1213A



U1194A

U5850 Series True/IR thermal imagers

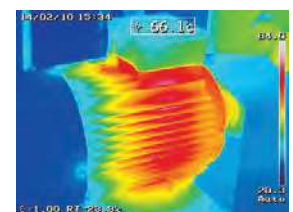
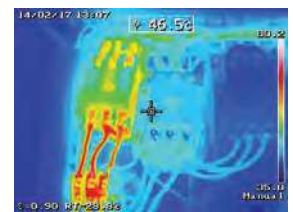
See more details with in-camera fine resolution

- Fine resolution capability delivers the clarity of 320 x 240 pixels at the cost of a 160 x 120 pixels detector. Time lapse mode takes images at preset intervals unattended.
- For distant and inaccessible targets: digital zoom magnifies by up to 4x
- Accurately measure objects as close as 10 cm (3.9 in) to distinguish close-fit components
- Compact, lightweight, ergonomic with easy-to-use customizable color palette
- High temperature range (up to 1200 °C)



True/IR

U5857A



True/IR images